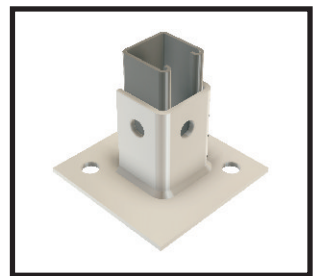
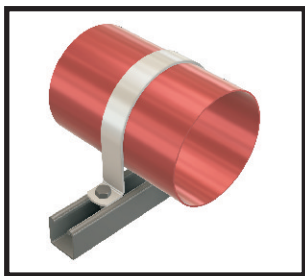


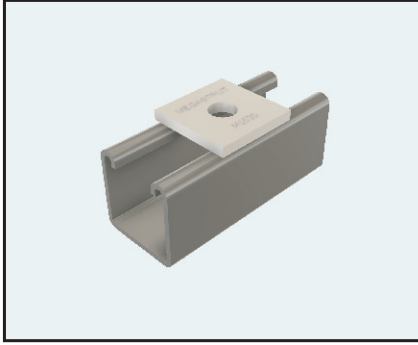
# Megastrut Connections<sup>®</sup>



**Technical Innovation in Cable management and Support Solutions**

# Type FF - Flat Fittings

Typical Applications for Flat Fittings

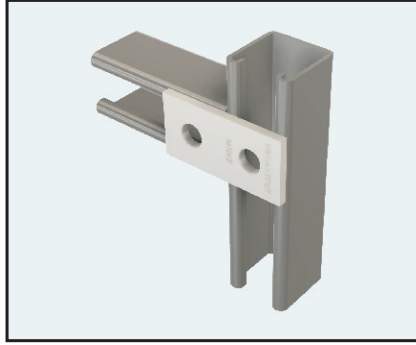


ONE HOLE PLATE

**M1019|M1020**

Mass: 0.06

Finish Code: HDG, SS304 & SS316

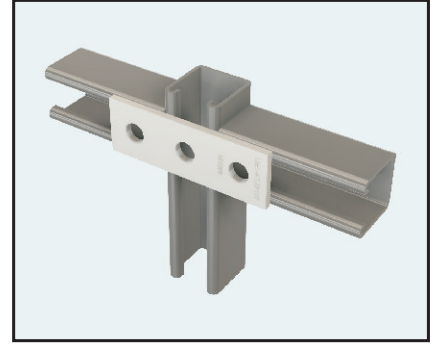


TWO HOLE SPLICE PLATE

**M1065**

Mass: 0.15

Finish Code: HDG, SS304 & SS316



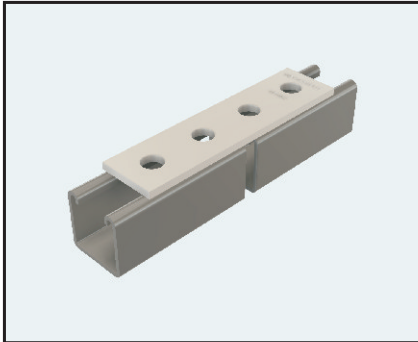
THREE HOLE SPLICE PLATE

**M1066**

Mass: 0.23

Finish Code: HDG, SS304 & SS316

Support Systems that make sense.

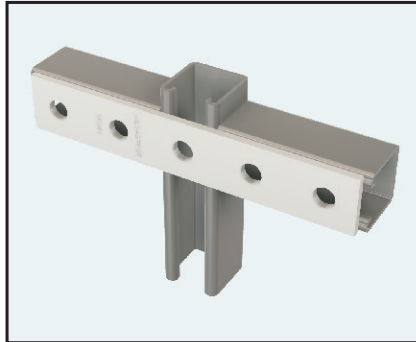


FOUR HOLE SPLICE PLATE

**M1067**

Mass: 0.33

Finish Code: HDG, SS304 & SS316

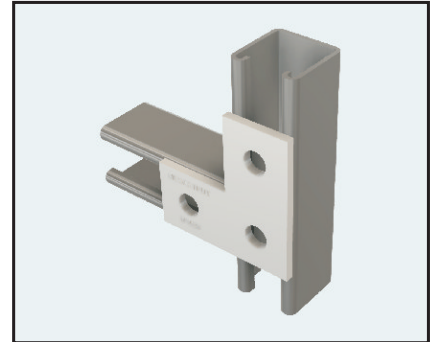


FIVE HOLE SPLICE PLATE

**M1941**

Mass: 0.41

Finish Code: HDG, SS304 & SS316



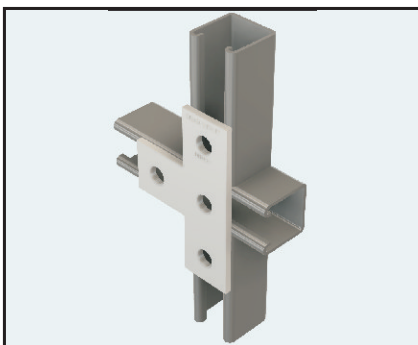
THREE HOLE CORNER PLATE

**M1036**

Mass: 0.28

Finish Code: HDG, SS304 & SS316.

More examples of popular connection are shown.

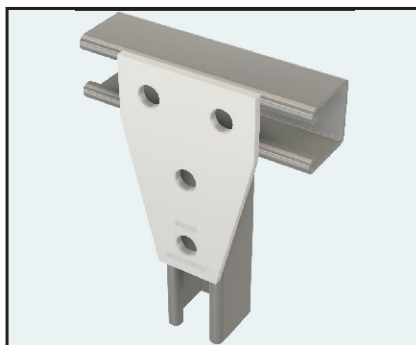


FOUR HOLE TEE PLATE

**M1031**

Mass: 0.34

Finish Code: HDG, SS304 & SS316

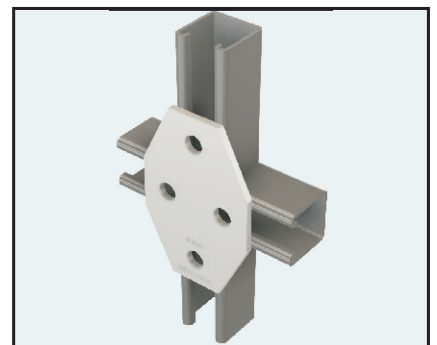


FOUR HOLE TEE GUSSET PLATE

**M1358**

Mass: 0.46

Finish Code: HDG, SS304 & SS316



FOUR HOLE CROSS GUSSET PLATE

**M1580**

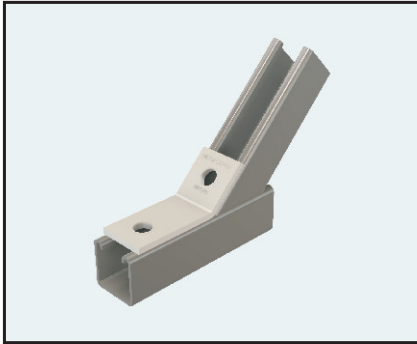
Mass: 0.36

Finish Code: HDG, SS304 & SS316

Metal Framing support system is designed with many time saving features, They are fully adjustable and reusable.

# Type AF - Angle Fittings

## Typical Applications for Angle Fittings



TWO HOLE OPEN ANGLE

**M1546|M2095|M2097** Mass: 0.29

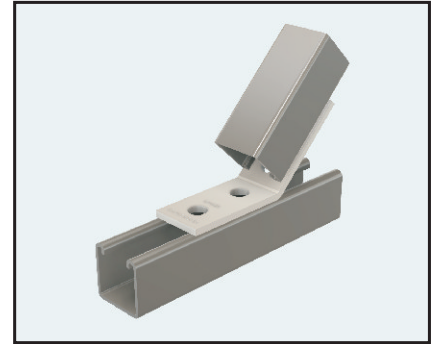
Finish Code: HDG, SS304 & SS316



TWO HOLE CLOSED ANGLE

**M1186|M2106** Mass: 0.28

Finish Code: HDG, SS304 & SS316



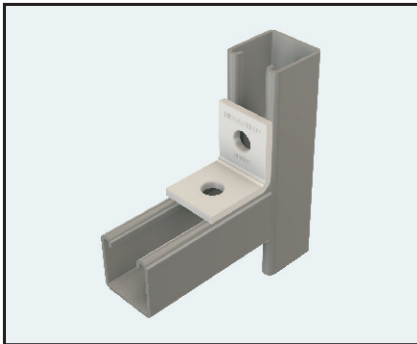
FOUR HOLE OPEN ANGLE

**M1074** Mass: 0.38

Finish Code: HDG, SS304 & SS316

## Typical Applications for 90° Angle Fittings

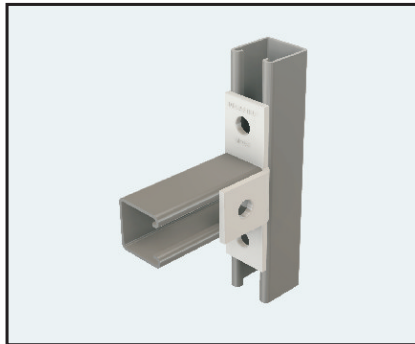
90° Angle Fittings connection arrangements are continued below.



TWO HOLE CORNER ANGLE

**M1026** Mass: 0.20

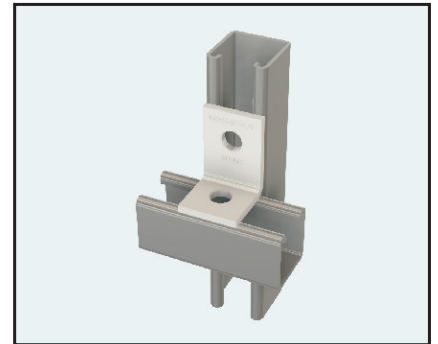
Finish Code: HDG, SS304 & SS316



FOUR HOLE OFFSET BENT TEE

**M1033** Mass: 0.38

Finish Code: HDG, SS304 & SS316



TWO HOLE CORNER ANGLE

**M1068** Mass: 0.19

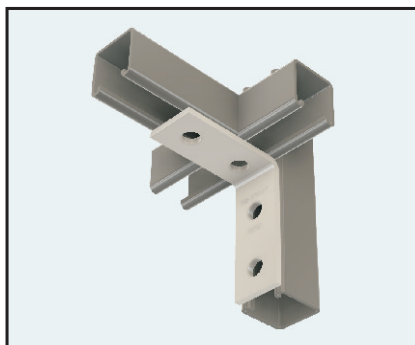
Finish Code: HDG, SS304 & SS316



THREE HOLE CORNER ANGLE

**M1326** Mass: 0.29

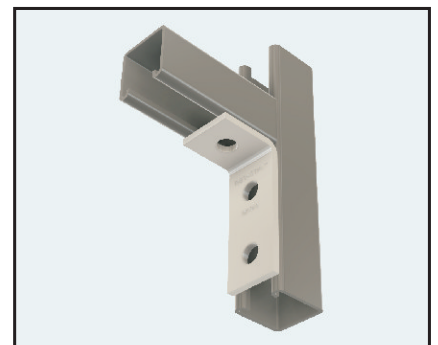
Finish Code: HDG, SS304 & SS316



FOUR HOLE CORNER ANGLE

**M1325** Mass: 0.37

Finish Code: HDG, SS304 & SS316



THREE HOLE CORNER ANGLE

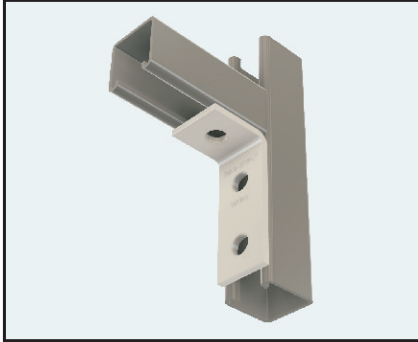
**M1346** Mass: 0.28

Finish Code: HDG, SS304 & SS316

Metal Framing system provides an economical solution for electrical, mechanical and industrial support with an unlimited variety of applications in the construction industry.

# Type AF - 90° Angle Fittings

Typical Applications for 90° Angle Fittings

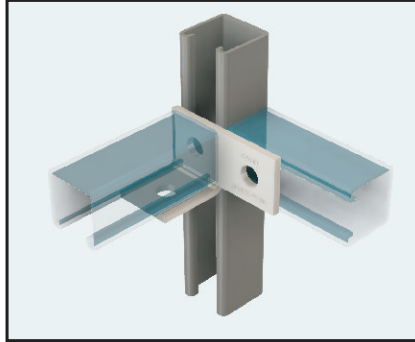


THREE HOLE CORNER ANGLE

**M1346**

Mass: 0.24

Finish Code: HDG, SS304 & SS316

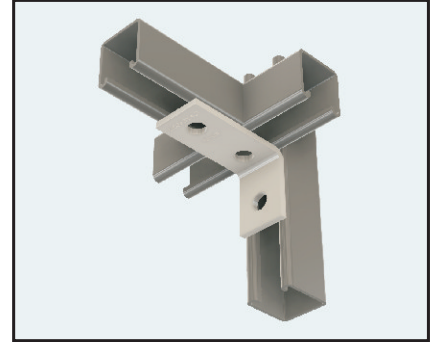


THREE HOLE OFFSET BENT ANGLE (RH)

**M1037**

Mass: 0.24

Finish Code: HDG, SS304 & SS316



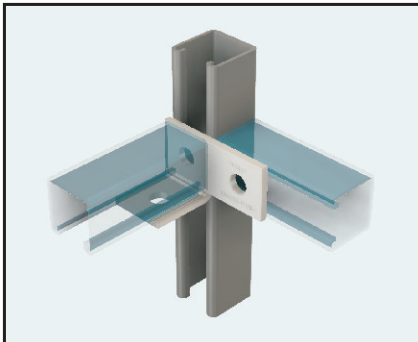
THREE HOLE CORNER ANGLE

**M1458**

Mass: 0.24

Finish Code: HDG, SS304 & SS316

Designed for your Support Systems Requirements.

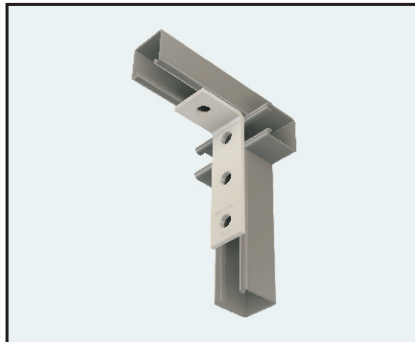


THREE HOLE OFFSET BENT ANGLE (LH)

**M1038**

Mass: 0.24

Finish Code: HDG, SS304 & SS316

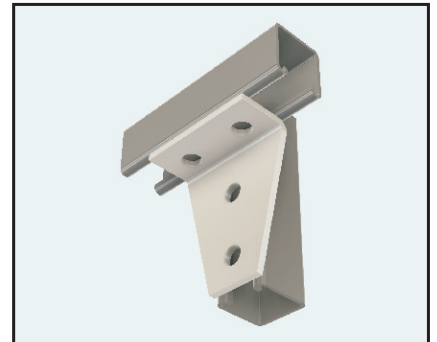


FOUR HOLE CORNER ANGLE

**M1278**

Mass: 0.24

Finish Code: HDG, SS304 & SS316

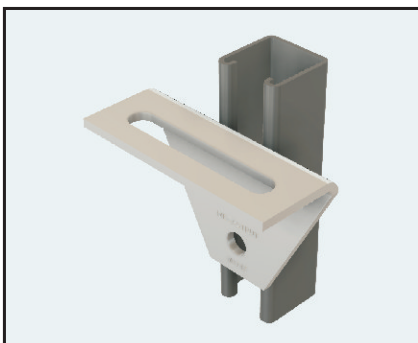


FOUR HOLE GUSSET SHELF ANGLE

**M1359**

Mass: 0.50

Finish Code: HDG, SS304 & SS316

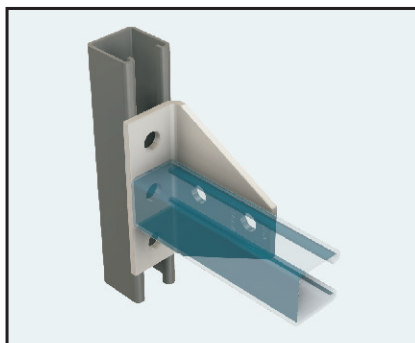


TWO HOLE ADJUSTABLE CORNER ANGLE

**M1713**

Mass: 0.67

Finish Code: HDG, SS304 & SS316



FIVE HOLE CORNER GUSSET

**M1727**

Mass: 0.37

Finish Code: HDG, SS304 & SS316



UNIVERSAL SHELF BRACKET - WELDED

**M2484**

Mass: 0.58

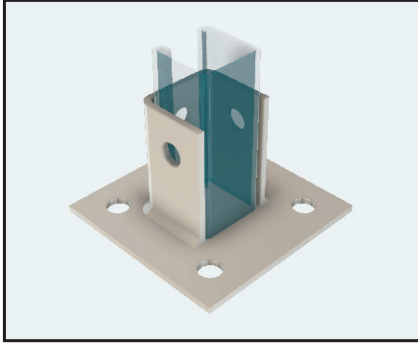
Finish Code: HDG, SS304 & SS316

The [Megastrut Connections](#) range is designed and manufactured by Cable management market leader [Megastrut Connections](#).



# Type BF - Base Fittings

## Typical Applications for Base Fittings

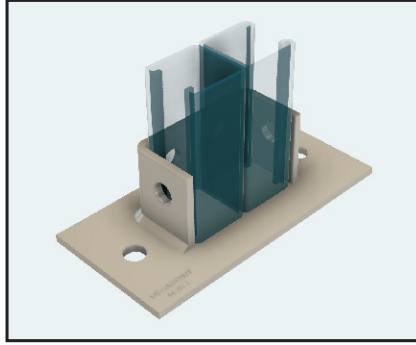


POST BASE FOR P1000 CHANNEL

**M2072A**

Mass: 0.58

Finish Code: HDG, SS304 & SS316

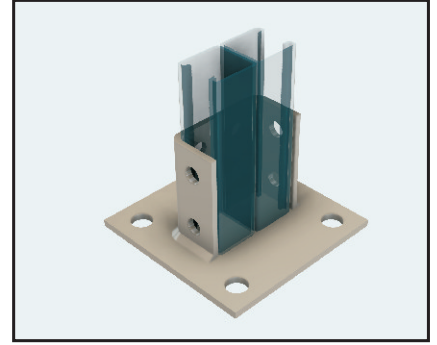


POST BASE FOR P1001 & P1001A CHANNEL

**M2073**

Mass: 0.92

Finish Code: HDG, SS304 & SS316



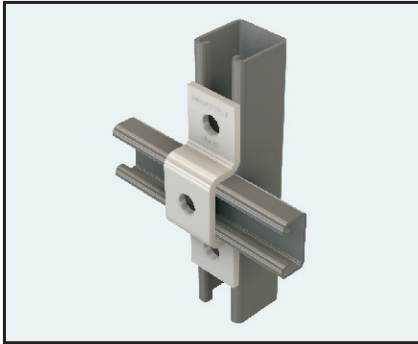
POST BASE FOR P1001 & P1001A CHANNEL

**M2073A**

Mass: 1.85

Finish Code: HDG, SS304 & SS316

## Typical Applications for U and Z Fittings

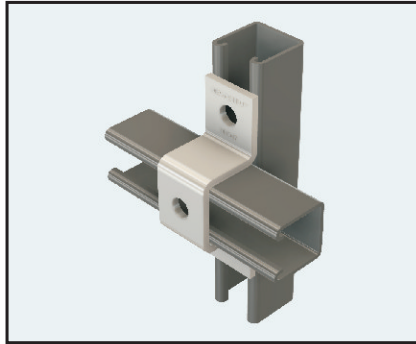


THREE HOLE U SUPPORT

**M4047**

Mass: 0.33

Finish Code: HDG, SS304 & SS316

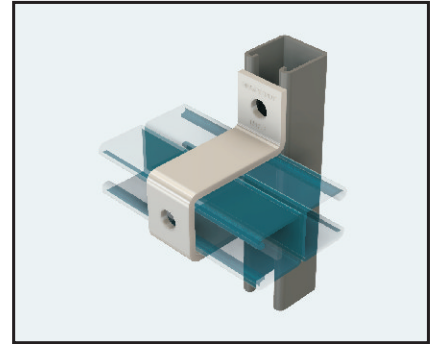


THREE HOLE U SUPPORT

**M1047**

Mass: 0.41

Finish Code: HDG, SS304 & SS316



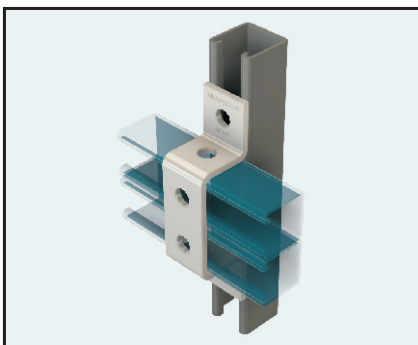
THREE HOLE U SUPPORT

**M1737**

Mass: 0.62

Finish Code: HDG, SS304 & SS316.

More examples of popular connection are shown.

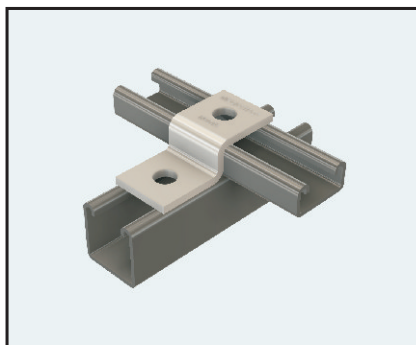


SIX HOLE U SUPPORT

**M1043**

Mass: 0.52

Finish Code: HDG, SS304 & SS316

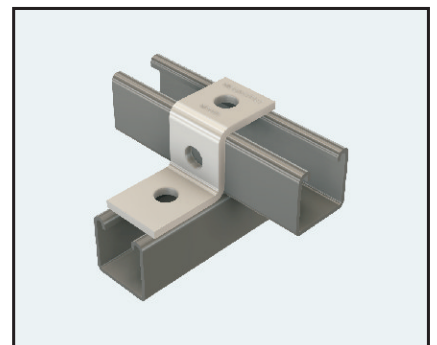


TWO HOLE Z SUPPORT

**M4045**

Mass: 0.46

Finish Code: HDG, SS304 & SS316



TWO HOLE Z SUPPORT

**M1045**

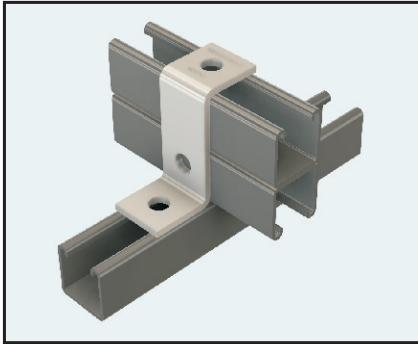
Mass: 0.36

Finish Code: HDG, SS304 & SS316

Metal Framing support system is designed with many time saving features, They are fully adjustable and reusable.

# U and Z Fittings

## Typical Applications for U and Z Fittings

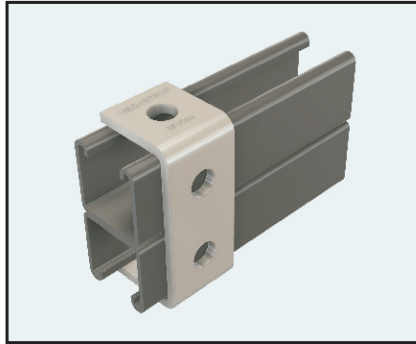


THREE HOLE Z SUPPORT

**M1453**

Mass: 0.36

Finish Code: HDG, SS304 & SS316

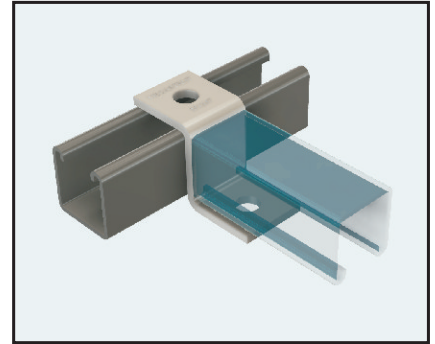


FOUR HOLE CLAMP

**M1044**

Mass: 0.37

Finish Code: HDG, SS304 & SS316



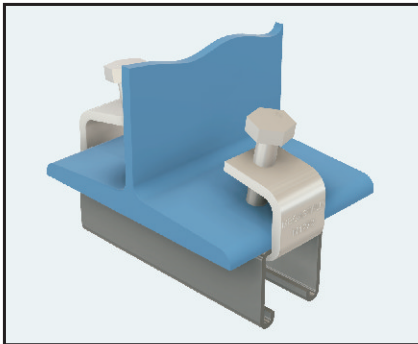
TWO HOLE Z SUPPORT

**M1347**

Mass: 0.27

Finish Code: HDG, SS304 & SS316

## Typical Applications for Beam Clamps

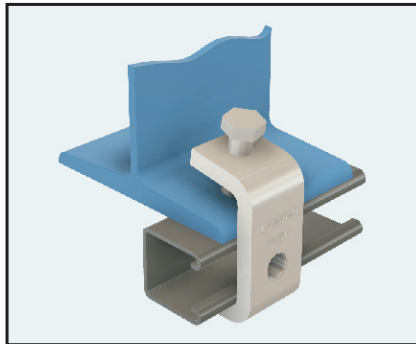


BEAM CLAMP

**M1272**

Mass: 0.16

Finish Code: HDG, SS304 & SS316

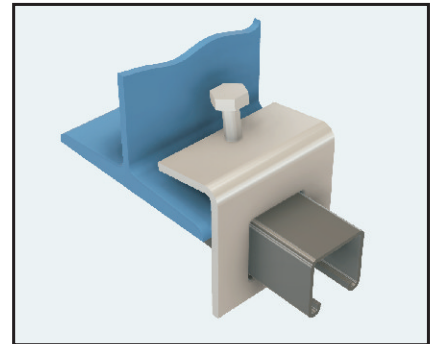


BEAM CLAMP

**M1271**

Mass: 0.45

Finish Code: HDG, SS304 & SS316

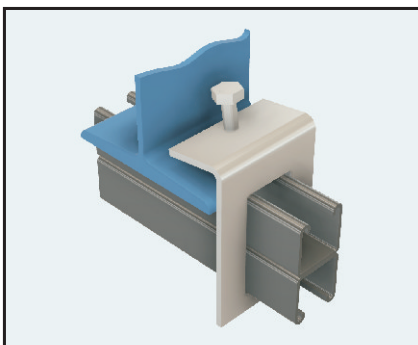


BEAM CLAMP

**M1796**

Mass: 0.44

Finish Code: HDG, SS304 & SS316

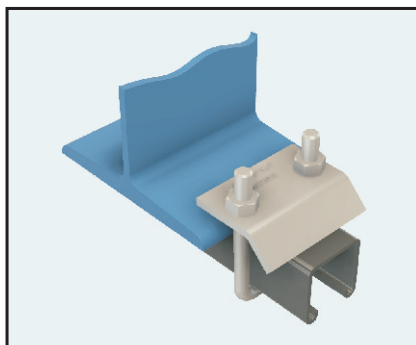


BEAM CLAMP

**M1796-D**

Mass: 0.52

Finish Code: HDG, SS304 & SS316

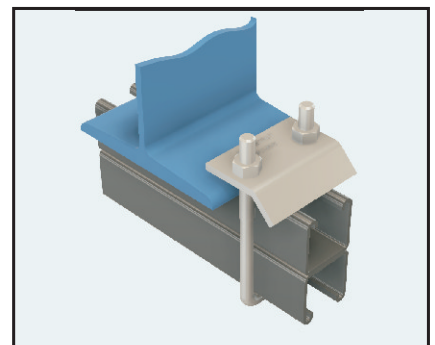


BEAM CLAMP

**M2785**

Mass: 0.33

Finish Code: HDG, SS304 & SS316



BEAM CLAMP

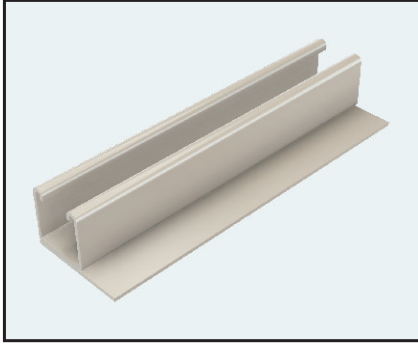
**M2786**

Mass: 0.38

Finish Code: HDG, SS304 & SS316

When the job calls for Strut Connections,  
Megastrut Connections is simply the best choice.

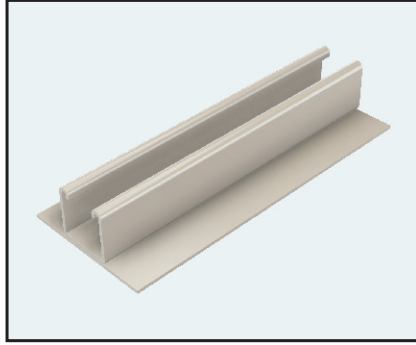
# Special Channels and Combinations



**M1003**

Length=3m

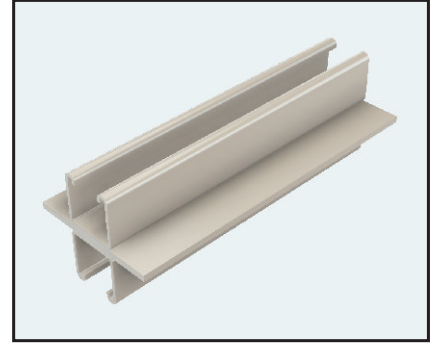
Finish Code: HDG



**M1003-A**

Length=3m

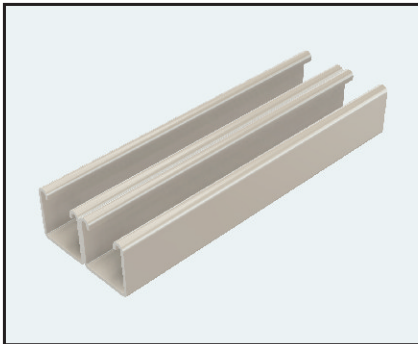
Finish Code: HDG



**M1003-B**

Length=6m

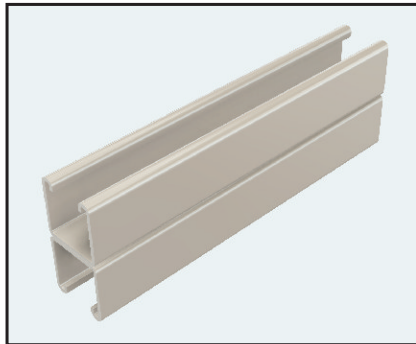
Finish Code: HDG



**M1001-A**

Length=6m

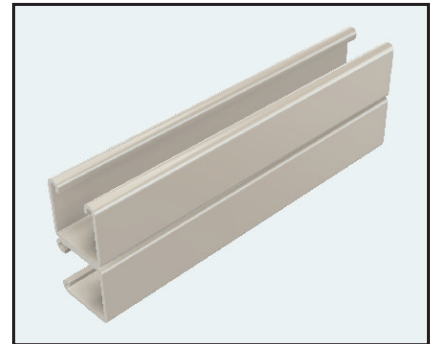
Finish Code: HDG



**M1001**

Length=6m

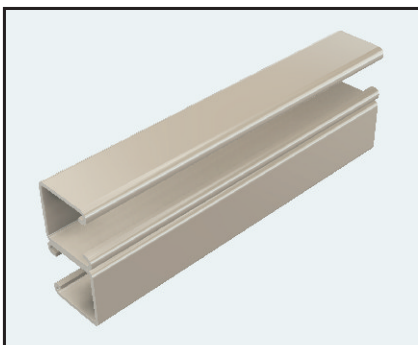
Finish Code: HDG



**M1001-C**

Length=6m

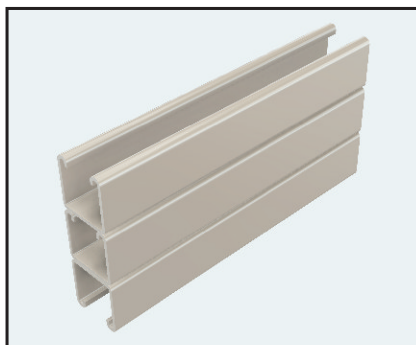
Finish Code: HDG



**M1001-B**

Length=6m

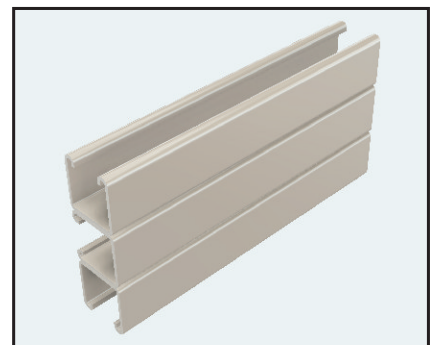
Finish Code: HDG



**M1001-3**

Length=6m

Finish Code: HDG



**M1001-A3**

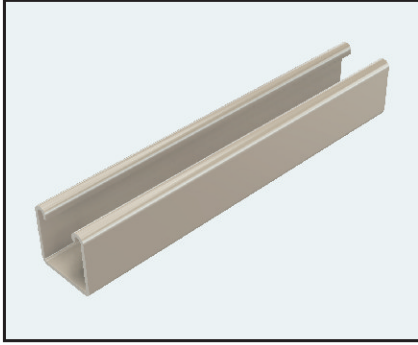
Length=6m

Finish Code: HDG

When the job calls for Strut Connections,  
Megastrut Connections is simply the best choice.

# Metal Framing Channels

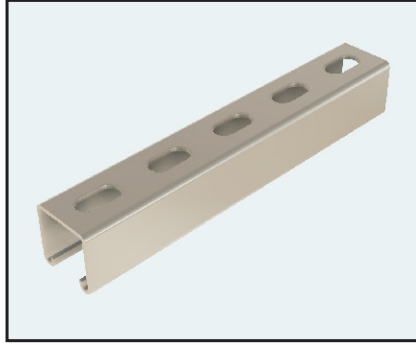
Standard Lengths: 5.0 m & 6.0 m.



Thickness: 2.5mm

**M1000 Channel** 6.0 Metre

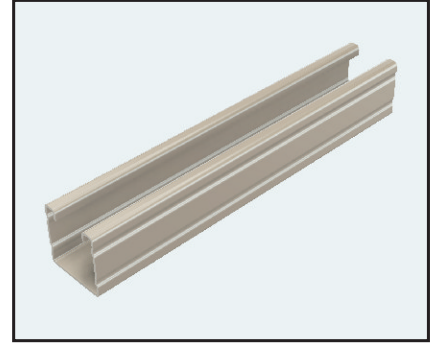
Finish Code: HDG, SS304 & SS316



Slot size: 14 X 28mm @ 50mm Centres.

**M1001T Channel** 5.0 Metre

Finish Code: HDG, SS304 & SS316



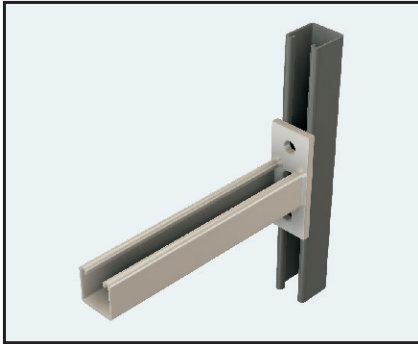
Thickness: 1.5mm

**M2000T** 5.0 Metre

Finish Code: HDG, SS304 & SS316

## Cantilever Bracket

### Single Cantilever Bracket

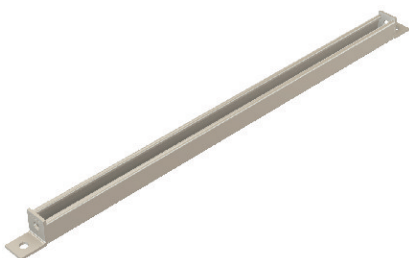


**M254**

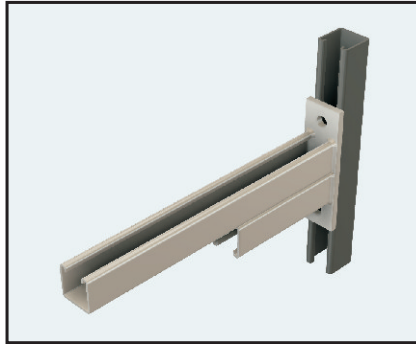
Finish Code: HDG, SS304 & SS316

Length	Unit Mass (Kg)	Total UDL (Kg)
150	0.88	470
200	1.00	345
250	1.45	268
350	1.80	188
450	2.05	149
550	2.00	120
650	2.10	105

### MB914 Manhole Bracket



### Staggered Cantilever Bracket

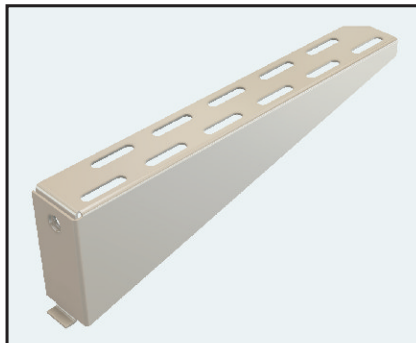


**M254S**

Finish Code: HDG, SS304 & SS316

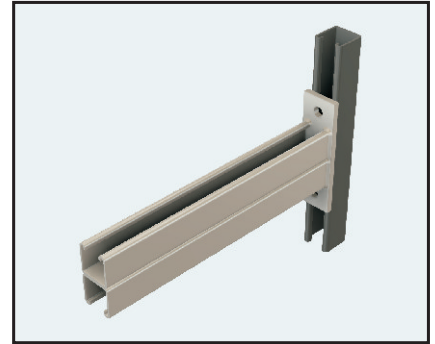
Length	Unit Mass (Kg)	Total UDL (Kg)
650/250	2.85	285
850/300	3.50	210
1050/350	4.35	178

### STB249 Slotted Tray Bracket



**STB249**

### Double Cantilever Bracket



**M254D**

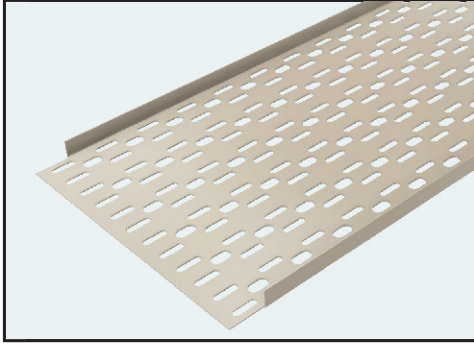
Finish Code: HDG, SS304 & SS316

Length	Unit MASS (Kg)	Total UDL (Kg)
650	4.05	285
850	5.10	210
1050	6.25	178

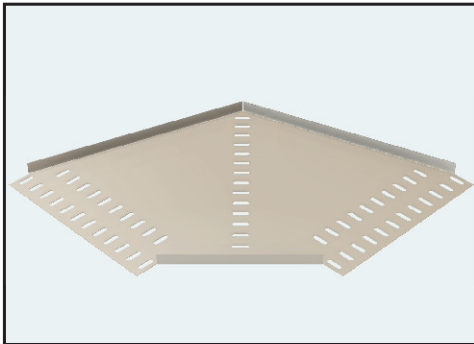
Part No:	Dims (mm) Length	Dims (mm) height
STB150	150	50
STB230	230	70
STB305	305	87
STB380	380	110
STB457	457	126
STB610	610	164

# Cable Tray

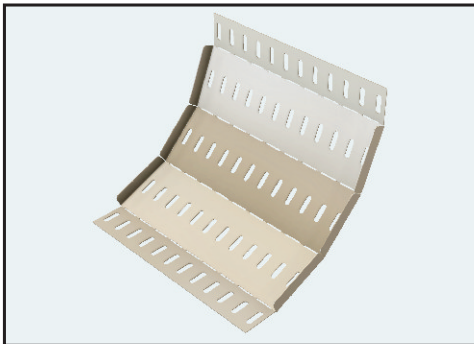
Light Duty Cable Tray



LIT CABLE TRAY STRAIGHT X 3M

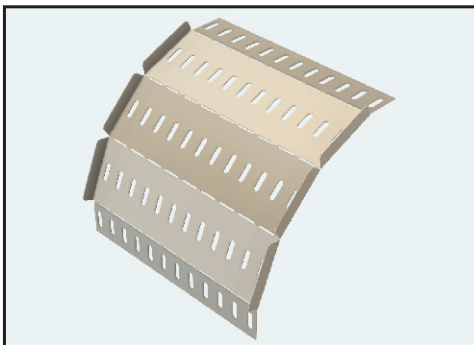


LIT CABLE TRAY HORIZONTAL BEND



LIT CABLE TRAY INTERNAL BEND

USED AS INTERNAL BEND=90°,60°,45°,30°



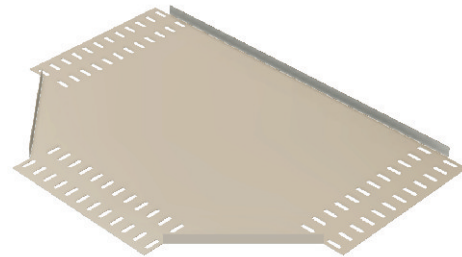
LIT CABLE TRAY EXTERNAL BEND

USED AS EXTERNAL BEND=90°,60°,45°,30°

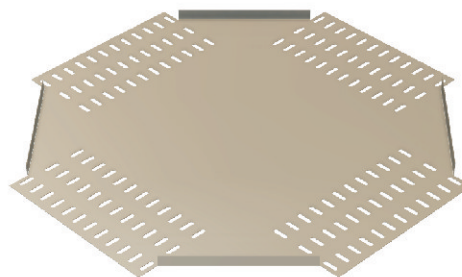
Technical drawing showing dimensions and specifications for the cable tray:

- Dimensions: 20x11, 25x7, 25, 50, 25, W, A
- Specifications:
  - 12 mm (W = 50-225 mm)
  - 20 mm (W = 300-900 mm)

Part No:	Finish		W	A
LIT12/50	PG	SS	50 mm	12 mm
LIT12/75	PG	SS	75 mm	12 mm
LIT12/100	PG	SS	100 mm	12 mm
LIT12/150	PG	SS	150 mm	12 mm
LIT12/225	PG	SS	225 mm	12 mm
LIT20/300	PG	SS	300 mm	20 mm
LIT20/450	PG	SS	450 mm	20 mm
LIT20/600	PG	SS	600 mm	20 mm
LIT20/900	PG	SS	900 mm	20 mm



LIT CABLE TRAY TEE



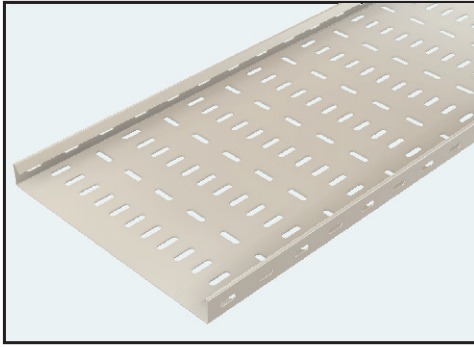
LIT CABLE TRAY 4-WAY

Designed For Your Cable Support Requirements.

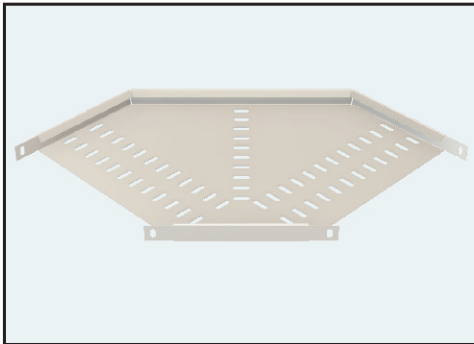


# Cable Tray

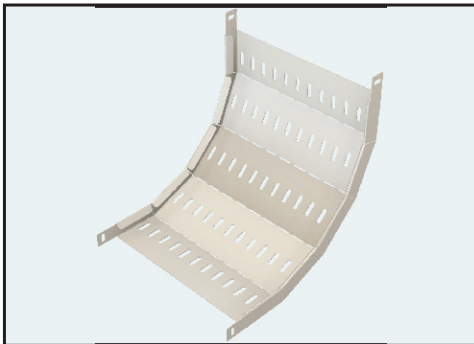
Medium Duty Return Flange Cable Tray



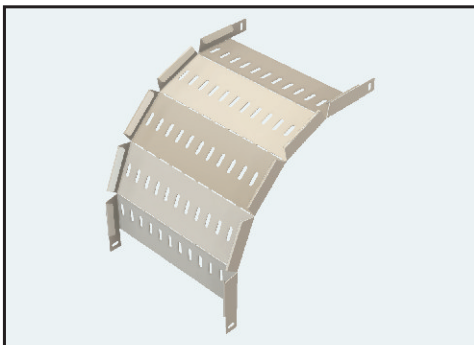
**R30 CABLE TRAY STRAIGHT X 3M**



**R30 CABLE TRAY HORIZONTAL BEND**

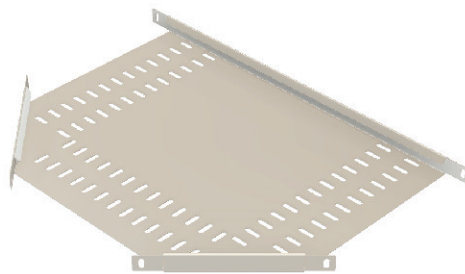


**R30 CABLE TRAY INTERNAL BEND**  
USED AS INTERNAL BEND=90°,60°,45°,30°

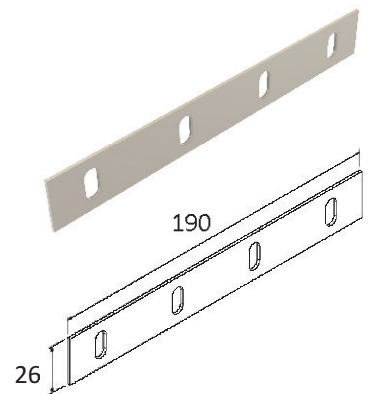


**R30 CABLE TRAY EXTERNAL BEND**  
USED AS EXTERNAL BEND=90°,60°,45°,30°

Part No:	Finish		W
R30/50	PG	SS	50 mm
R30/75	PG	SS	75 mm
R30/100	PG	SS	100 mm
R30/150	PG	SS	150 mm
R30/225	PG	SS	225 mm
R30/300	PG	SS	300 mm
R30/450	PG	SS	450 mm
R30/600	PG	SS	600 mm
R30/900	PG	SS	900 mm



**R30 CABLE TRAY TEE**



**R30 SPLICE SET**

**Straight Section Tray**

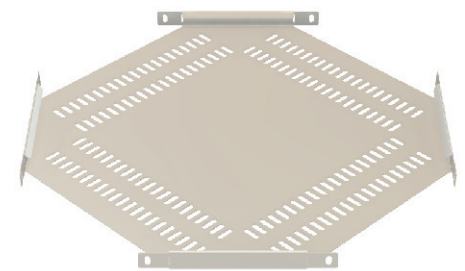
**Hardware:**

2 Off: Splice Plates

8 Off: M6x12 Gutter Bolt & Nuts  
(W=450-900mm): Add on

1 Off: Centre Splice

4 Off: M6x12 Gutter Bolt & Nuts

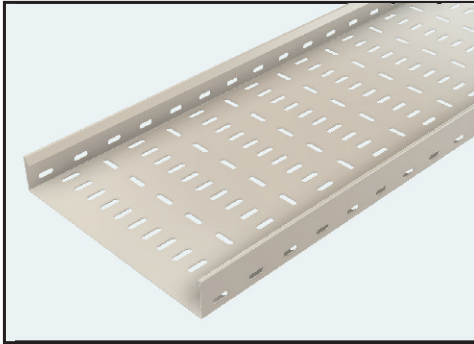


**R30 CABLE TRAY 4-WAY**

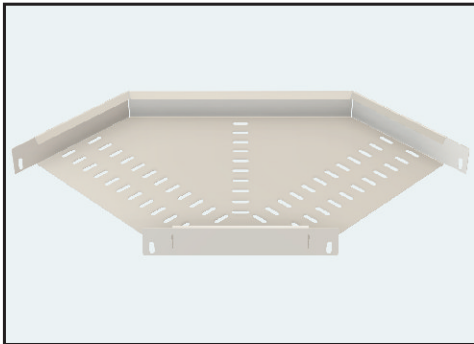
Designed For Your Cable Support Requirements.

# Cable Tray

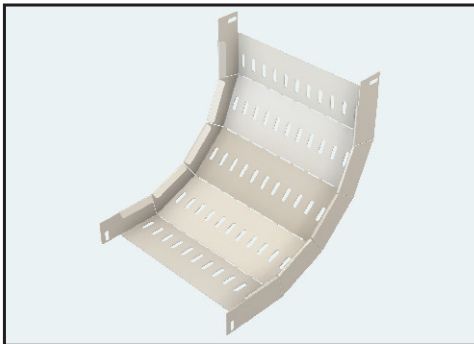
Heavy Duty Return Flange Cable Tray



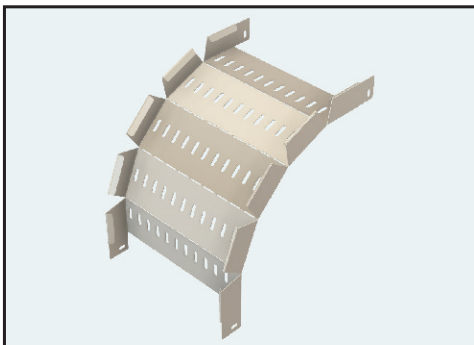
**R50 CABLE TRAY STRAIGHT X 3M**



**R50 CABLE TRAY HORIZONTAL BEND**

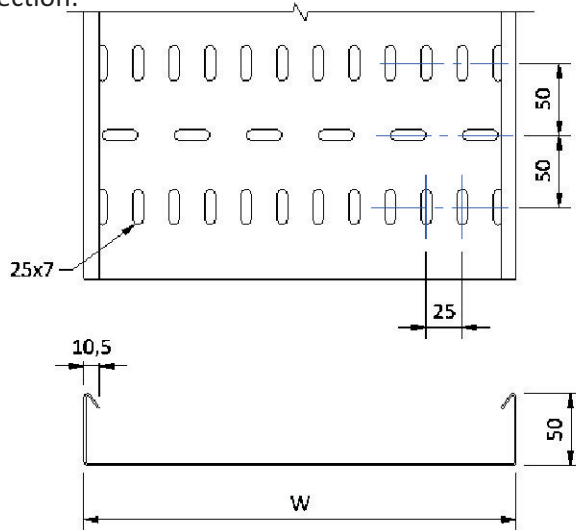


**R50 CABLE TRAY INTERNAL BEND**  
USED AS INTERNAL BEND=90°,60°,45°,30°

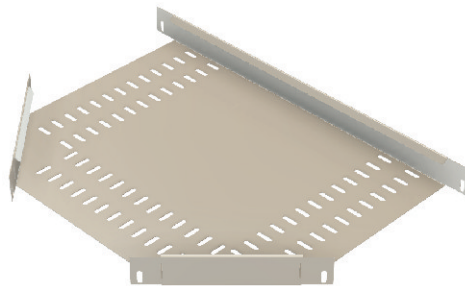


**R50 CABLE TRAY EXTERNAL BEND**  
USED AS EXTERNAL BEND=90°,60°,45°,30°

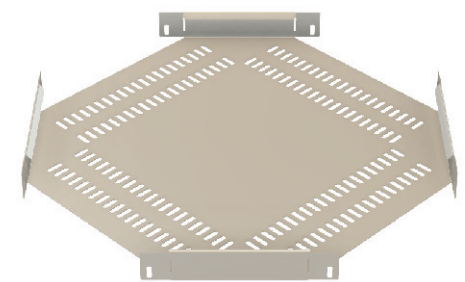
Straight Section:



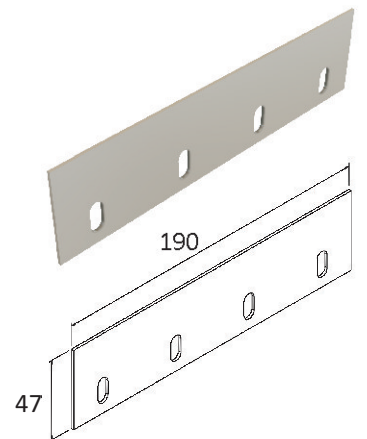
Part No:	Finish		W
R50/75	PG	SS	75 mm
R50/100	PG	SS	100 mm
R50/150	PG	SS	150 mm
R50/225	PG	SS	225 mm
R50/300	PG	SS	300 mm
R50/450	PG	SS	450 mm
R50/600	PG	SS	600 mm
R50/750	PG	SS	750 mm
R50/900	PG	SS	900 mm



**R50 CABLE TRAY TEE**



**R50 CABLE TRAY 4-WAY**



**R50 SPLICE SET**

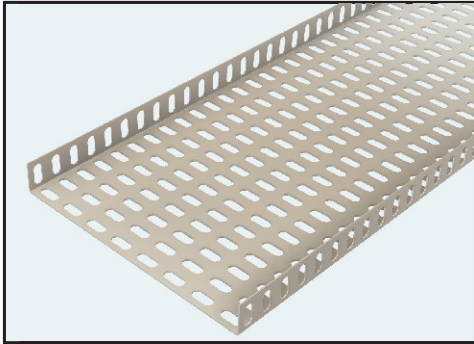
**Straight Section Tray Hardware:**

- 2 Off: Splice Plates
- 8 Off: M6x12 Gutter Bolt & Nuts (W=450-900mm): Add on
- 1 Off: Centre Splice
- 4 Off: M6x12 Gutter Bolt & Nuts

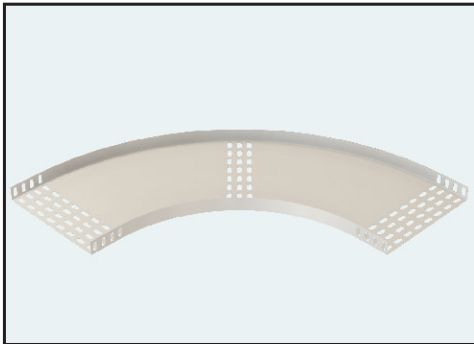
Designed For Your Cable Support Requirements.

# Cable Tray

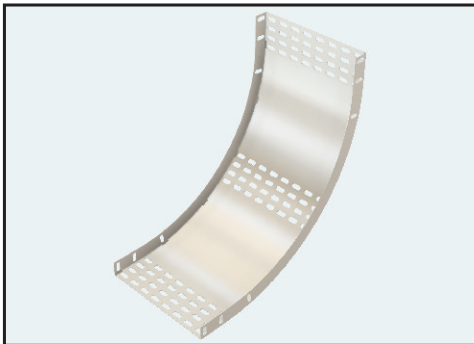
M38 Medium Duty Cable Tray



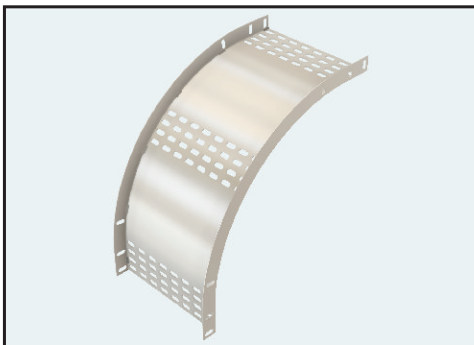
**M38 CABLE TRAY STRAIGHT X 3M**



**M38 CABLE TRAY HORIZONTAL BEND**

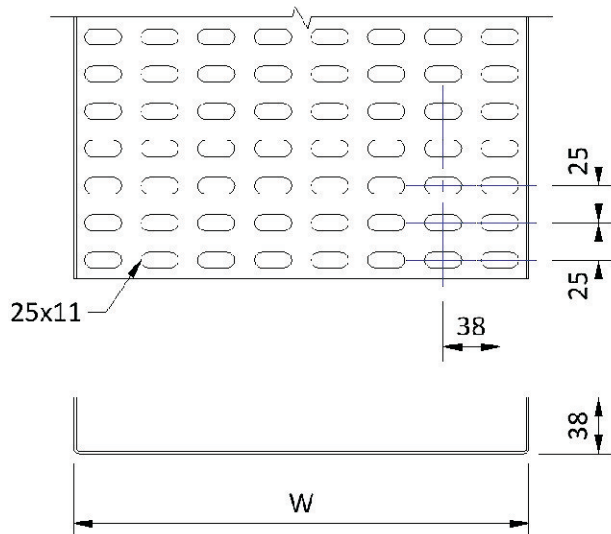


**M38 CABLE TRAY INTERNAL BEND  
USED AS INTERNAL BEND 90°**

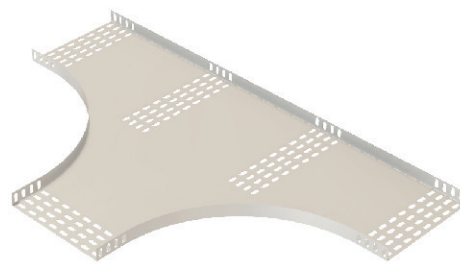


**M38 CABLE TRAY EXTERNAL BEND  
USED AS EXTERNAL BEND 90°**

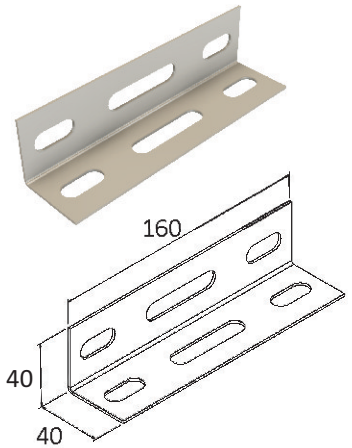
Straight Section: 3M



Part No:	Finish		W
	HDG	SS	
M38/75	HDG	SS	75 mm
M38/115	HDG	SS	115 mm
M38/152	HDG	SS	152 mm
M38/228	HDG	SS	228 mm
M38/305	HDG	SS	305 mm
M38/457	HDG	SS	457 mm
M38/610	HDG	SS	610 mm

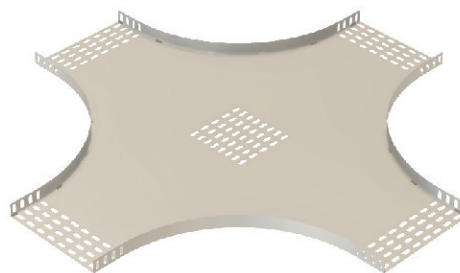


**M38 CABLE TRAY TEE**



**M38 SPLICE SET**

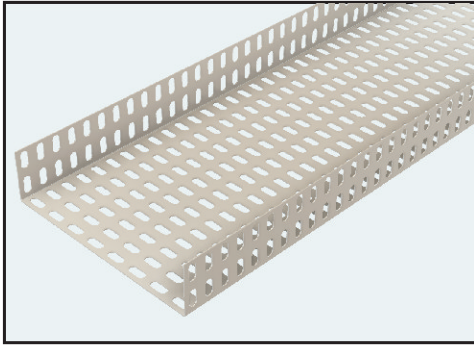
- Hardware:**
- 2 Off: Splice Plates.
  - 8 Off: M10x20 Dome Head Slotted Bolts.
  - 8 Off: M10 Hex Nuts & Flat Washers.
- (W=450-900mm): Add on
- 1 Off: Centre Splice
  - 4 Off: M10x20 Dome Head Slotted Bolts.
  - 4 Off: M10 Hex Nuts & Flat Washers.



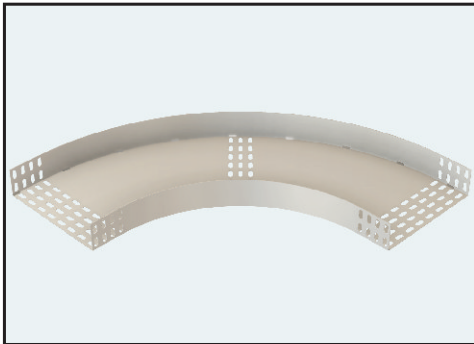
**M38 CABLE TRAY 4-WAY**

# Cable Tray

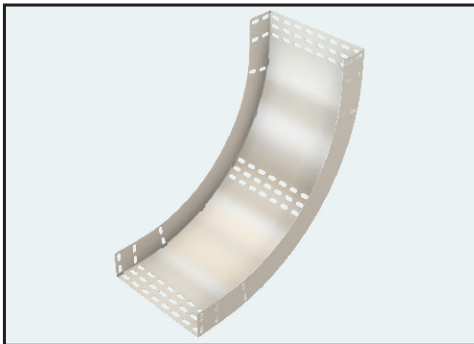
## H76 Heavy Duty Cable Tray



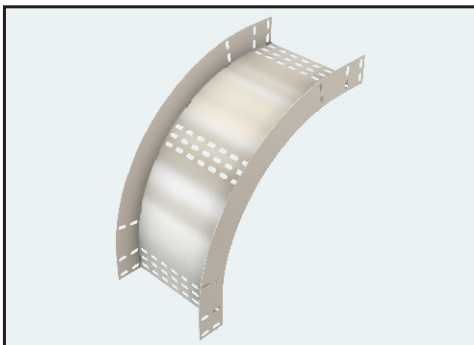
**H76 CABLE TRAY STRAIGHT X 3M**



**H76 CABLE TRAY HORIZONTAL BEND**

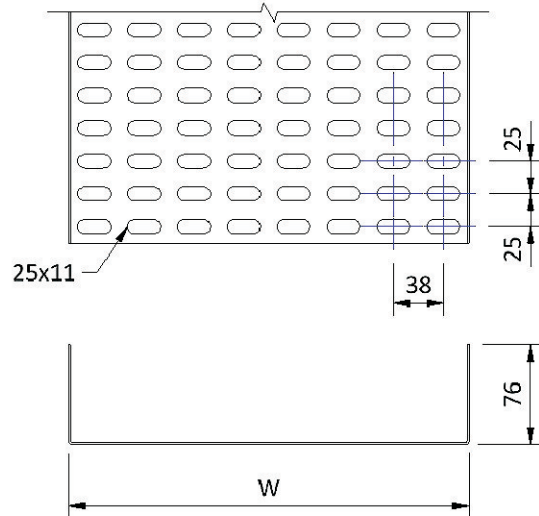


**H76 CABLE TRAY INTERNAL BEND  
USED AS INTERNAL BEND 90°**

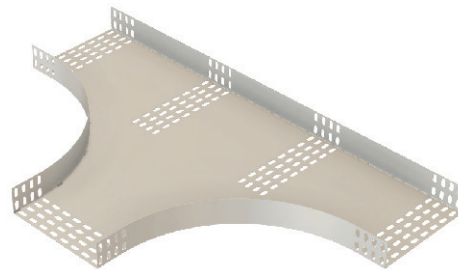


**H76 CABLE TRAY EXTERNAL BEND  
USED AS EXTERNAL BEND 90°**

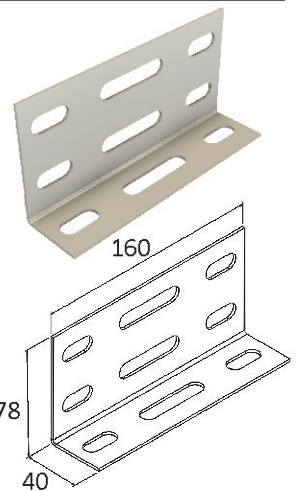
Straight Section: 3M



Part No:	Finish		W
	HDG	SS	
H76/75	HDG	SS	75 mm
H76/115	HDG	SS	115 mm
H76/152	HDG	SS	152 mm
H76/228	HDG	SS	228 mm
H76/305	HDG	SS	305 mm
H76/457	HDG	SS	457 mm
H76/610	HDG	SS	610 mm



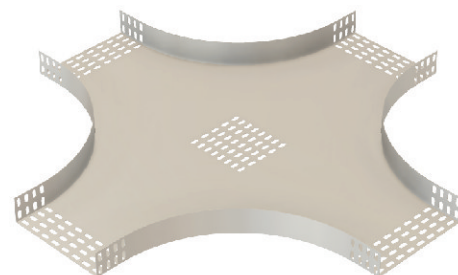
**H76 CABLE TRAY TEE**



**H76 SPLICE SET**

**Hardware:**

- 2 Off: Splice Plates.
- 8 Off: M10x20 Dome Head Slotted Bolts.
- 8 Off: M10 Hex Nuts & Flat Washers.
- (W=450-900mm): Add on
- 1 Off: Centre Splice
- 4 Off: M10x20 Dome Head Slotted Bolts.
- 4 Off: M10 Hex Nuts & Flat Washers.

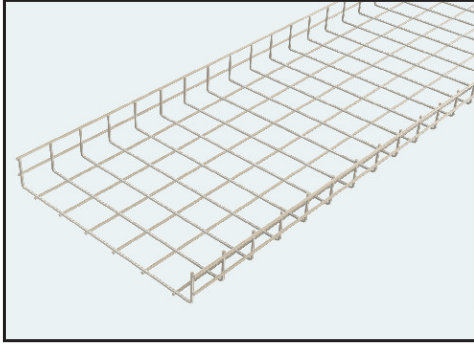


**H76 CABLE TRAY 4-WAY**

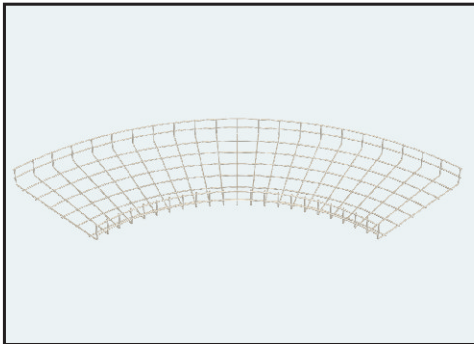


# Type - WM Wire Mesh Cable Tray

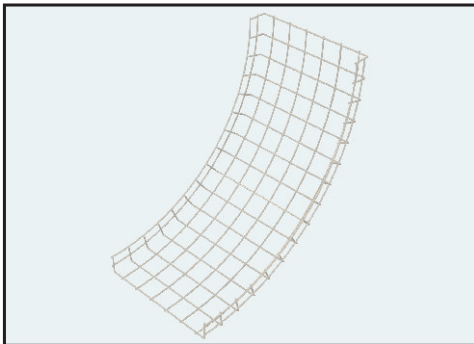
Wire Mesh Cable Tray



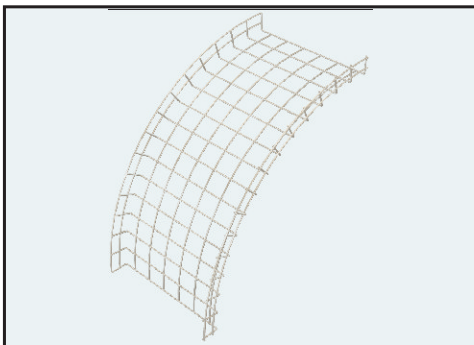
**W50/50 CABLE TRAY STRAIGHT X 3M**



**W50/50 CABLE TRAY HORIZONTAL BEND**

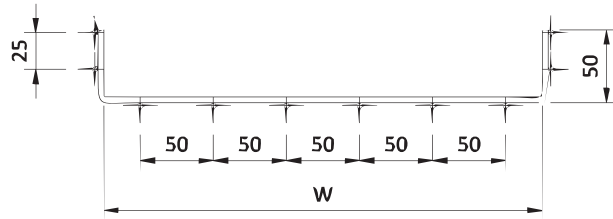


**W50/50 CABLE TRAY INTERNAL BEND  
USED AS INTERNAL BEND 90°**

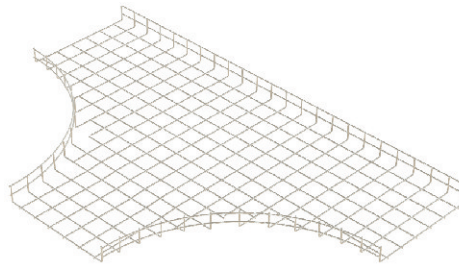


**W50/50 CABLE TRAY EXTERNAL BEND  
USED AS EXTERNAL BEND 90°**

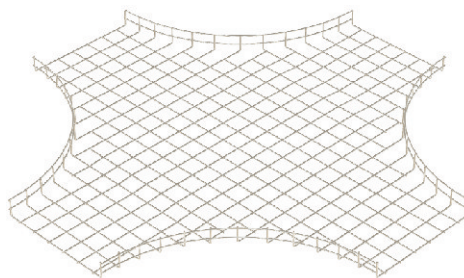
Wire Mesh Section: 3M



Part No:	Finish		W
W50/50	ZP	SS	50 mm
W50/100	ZP	SS	100 mm
W50/150	ZP	SS	150 mm
W50/200	ZP	SS	200 mm
W50/300	ZP	SS	300 mm
W50/400	ZP	SS	400 mm
W50/500	ZP	SS	500 mm
W50/600	ZP	SS	600 mm

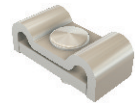


**W50 CABLE TRAY TEE**



**W50 CABLE TRAY 4-WAY**

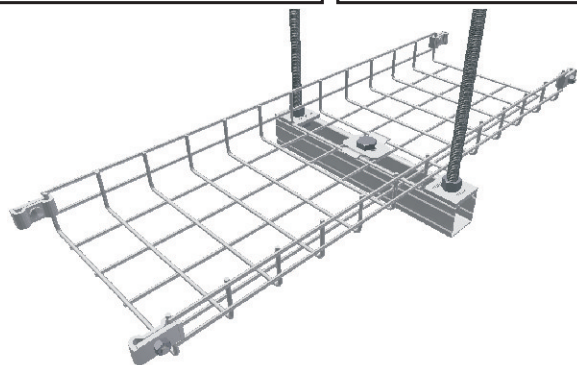
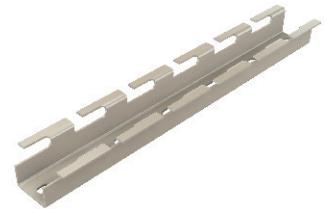
**WIRE CONNECTOR SET SPLICE**



**W50/75 HOLD DOWN SADDLE CLAMP. M6,M8,M10 & M12 (ZP)**



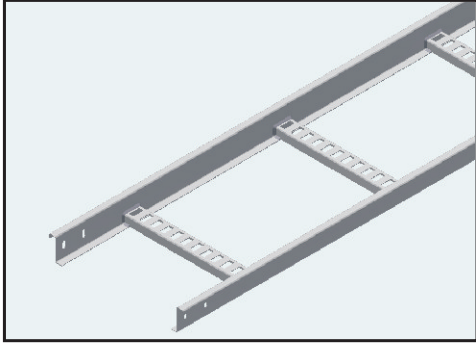
**CLIP ON SUPPORT 1.2M (PG)**



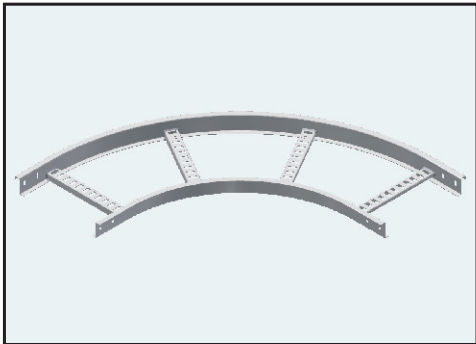


# Cable Ladder

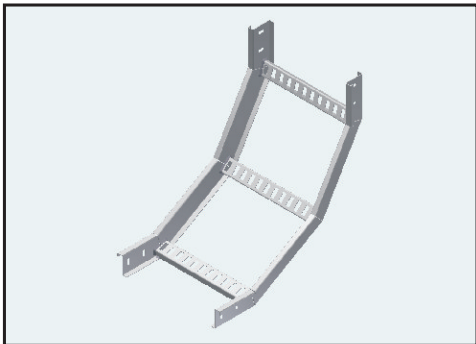
M55 Cable ladder | Horizontal Mounting



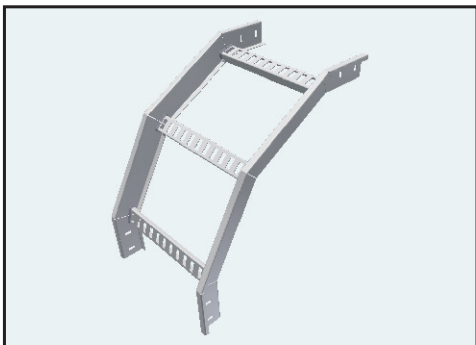
**M55 CABLE LADDER STRAIGHT X 3M**



**M55 HORIZONTAL BEND RADIUS 450**

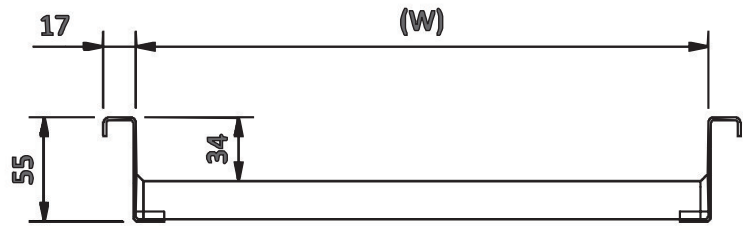


**M55 INTERNAL BEND RADIUS 450  
USED AS INTERNAL BEND 90°**



**M55 EXTERNAL BEND RADIUS 450  
USED AS EXTERNAL BEND 90°**

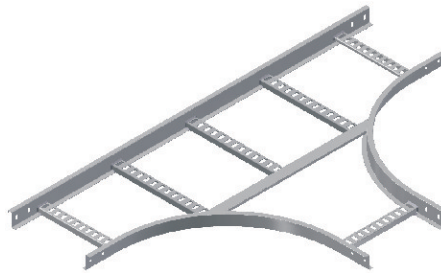
Straight Section: = 3M



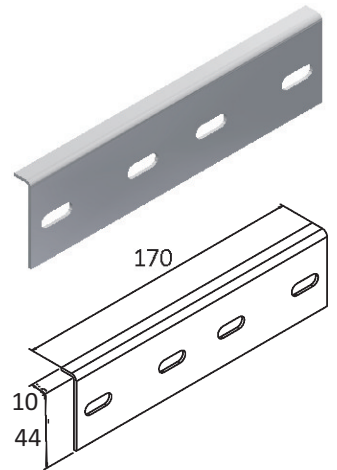
Part No:	Finish		W
M55/100	HDG	SS	100 mm
M55/150	HDG	SS	150 mm
M55/200	HDG	SS	200 mm
M55/300	HDG	SS	300 mm
M55/400	HDG	SS	400 mm
M55/450	HDG	SS	450 mm
M55/500	HDG	SS	500 mm

**SPECIFICATIONS:**

Application: Horizontal Mounting  
 Material: Mild Steel  
 Cross Rung Spacing: 375 mm  
 Accessories Radius: 450 mm

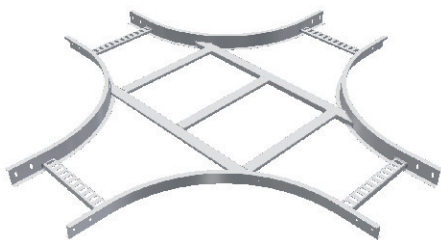


**M55 TEE**



**M55 SPLICE SET**

**Hardware:**  
 2 Off: Splice Plates.  
 8 Off: M6x16 Cup Square Bolt.  
 8 Off: M6 Hex Nuts.  
 8 Off: M6 Flat Washer.

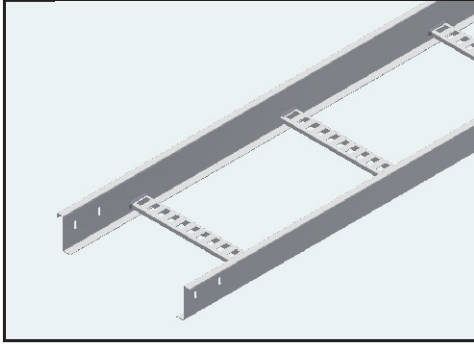


**M55 4-WAY**

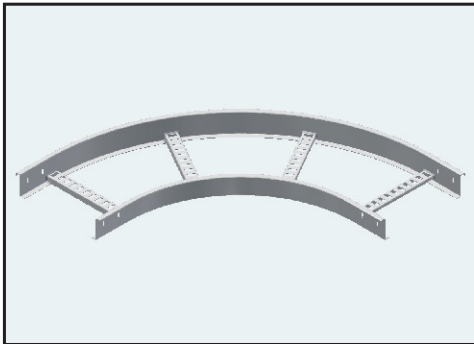
Designed For Your Cable Support Requirements.

# Cable Ladder

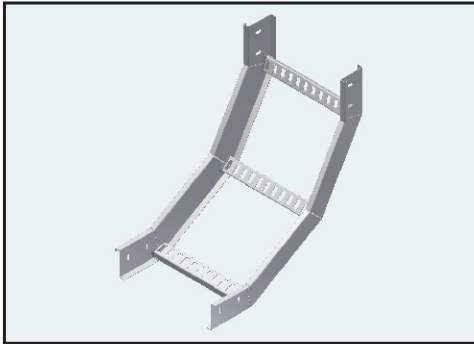
M76 Cable ladder | Horizontal Mounting



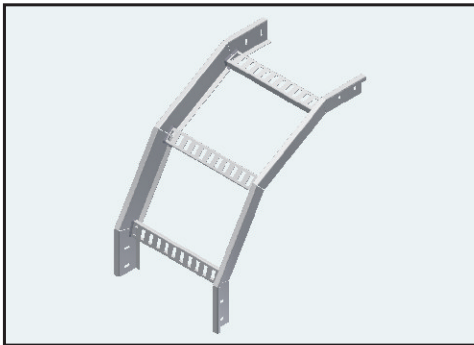
**M76 CABLE LADDER STRAIGHT X 3M**



**M76 HORIZONTAL BEND RADIUS 450**

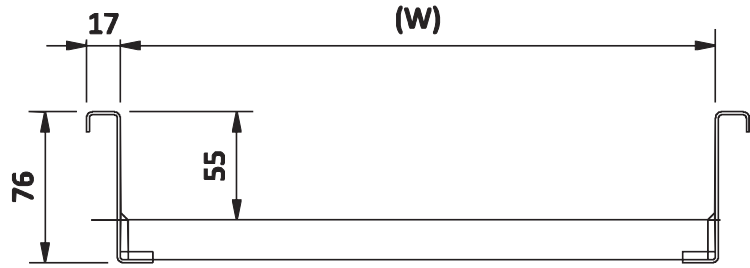


**M76 INTERNAL BEND RADIUS 450  
USED AS INTERNAL BEND 90°**



**M76 EXTERNAL BEND RADIUS 450  
USED AS EXTERNAL BEND 90°**

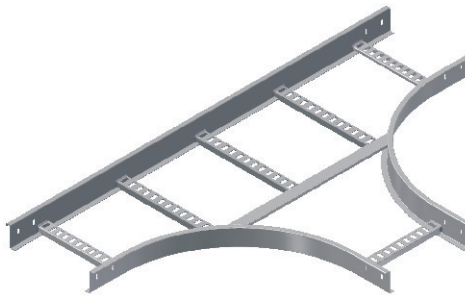
Straight Section: = 3M



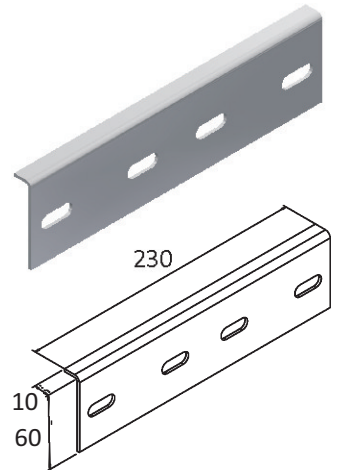
Part No:	Finish		W
M76/100	HDG	SS	100 mm
M76/150	HDG	SS	150mm
M76/200	HDG	SS	200 mm
M76/300	HDG	SS	300 mm
M76/400	HDG	SS	400 mm
M76/500	HDG	SS	500 mm
M76/600	HDG	SS	600 mm
M76/800	HDG	SS	800 mm
M76/1000	HDG	SS	1000 mm

**SPECIFICATIONS:**

Application: Horizontal Mounting  
 Material: Mild Steel  
 Cross Rung Spacing: 375 mm  
 Accessories Radius: 450 mm

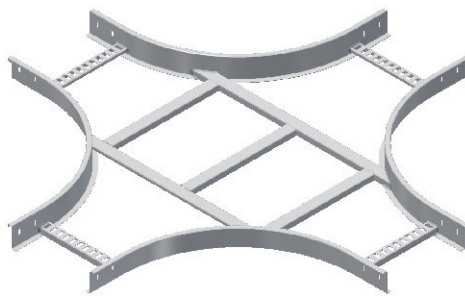


**M76 TEE**



**M76 SPLICE SET**

**Hardware:**  
 2 Off: Splice Plates.  
 8 Off: M6x16 Cup Square Bolt.  
 8 Off: M6 Hex Nuts.  
 8 Off: M6 Flat Washer.

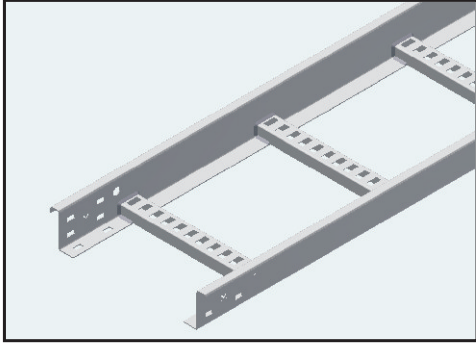


**M76 4-WAY**

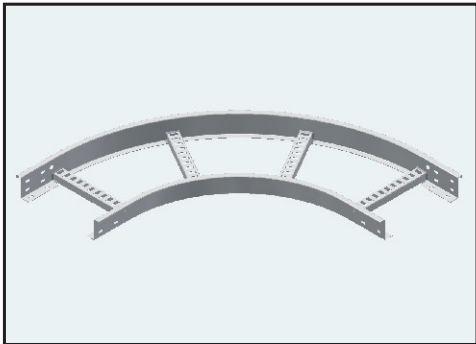
Designed For Your Cable Support Requirements.

# Cable Ladder

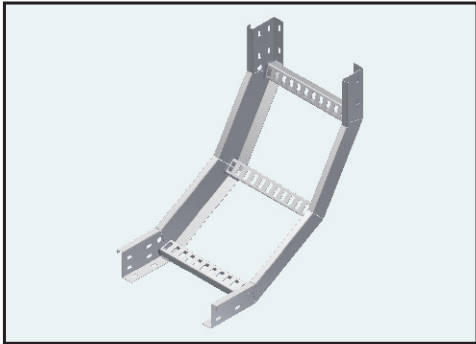
M75 Cable ladder | Edge Mounting



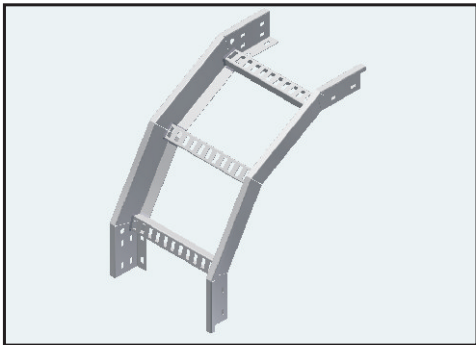
**M75 CABLE LADDER STRAIGHT X 3M**



**M75 HORIZONTAL BEND RADIUS 450**

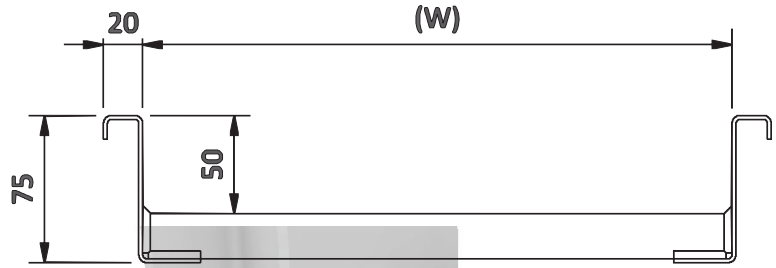


**M75 INTERNAL BEND RADIUS 450  
USED AS INTERNAL BEND 90°**



**M75 EXTERNAL BEND RADIUS 450  
USED AS EXTERNAL BEND 90°**

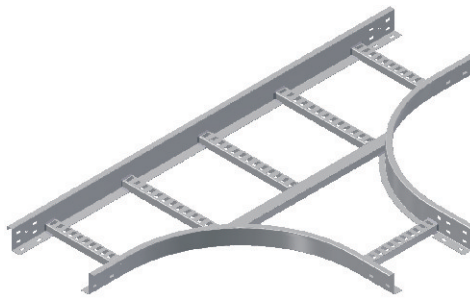
Straight Section: = 3M



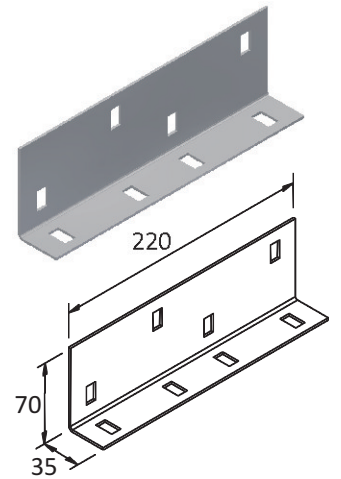
Part No:	Finish		W
M75/100	HDG	SS	100 mm
M75/150	HDG	SS	150 mm
M75/200	HDG	SS	200 mm
M75/300	HDG	SS	300 mm
M75/400	HDG	SS	400 mm
M75/500	HDG	SS	500 mm
M75/600	HDG	SS	600 mm
M75/800	HDG	SS	800 mm
M75/1000	HDG	SS	1000 mm

**SPECIFICATIONS:**

Application: Edge Mounting  
 Material: Mild Steel  
 Cross Rung Spacing: 300mm  
 Accessories Radius: 450 mm, 650 mm and 1000 mm

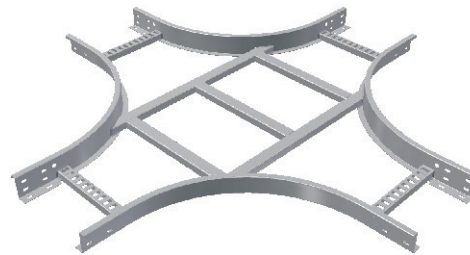


**M75 TEE**



**M75 SPLICE SET**

**Hardware:**  
 2 Off: Splice Plates.  
 16 Off: M8 x 16 Round Head Square Neck Bolt.  
 16 Off: M8 Hex Nuts.  
 16 Off: M8 Flat Washer.

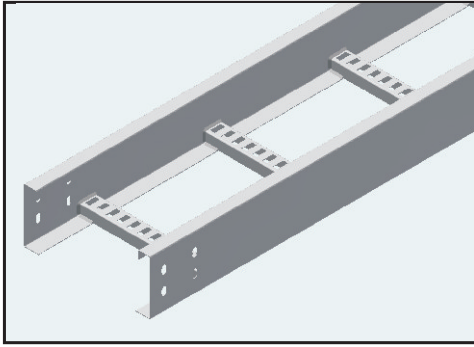


**M75 4-WAY**

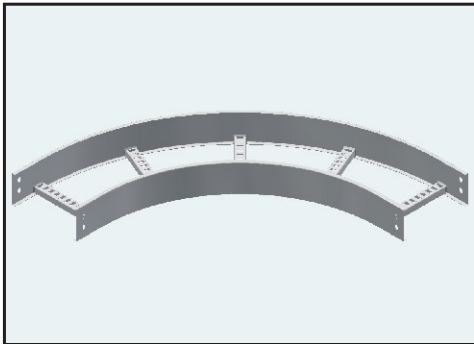
Designed For Your Cable Support Requirements.

# Cable Ladder

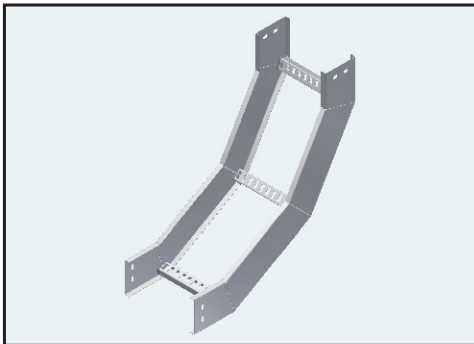
M20B CABLE LADDER | Horizontal Mounting



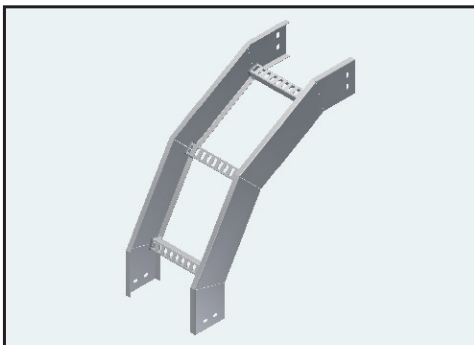
**M20B CABLE LADDER STRAIGHT X 6M**



**M20B HORIZONTAL BEND RADIUS 650**

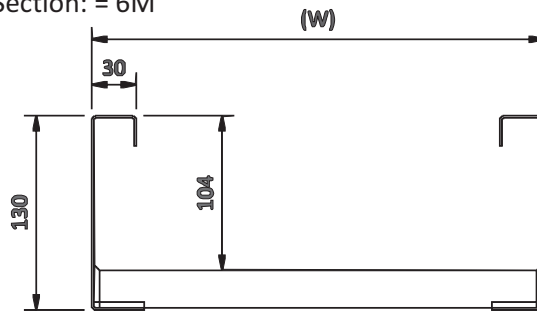


**M20B INTERNAL BEND RADIUS 650  
USED AS INTERNAL BEND 90°**



**M20B EXTERNAL BEND RADIUS 650  
USED AS EXTERNAL BEND 90°**

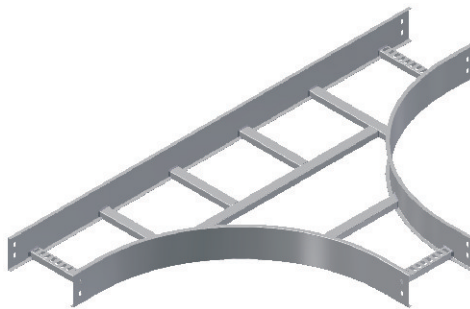
Straight Section: = 6M



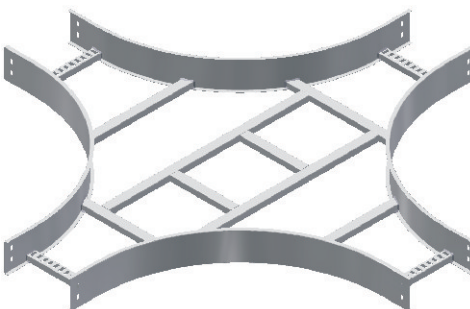
Part No:	Finish		W
M20B/150	HDG	SS	150 mm
M20B/200	HDG	SS	200 mm
M20B/300	HDG	SS	300 mm
M20B/400	HDG	SS	400 mm
M20B/500	HDG	SS	500 mm
M20B/600	HDG	SS	600 mm
M20B/650	HDG	SS	650 mm
M20B/800	HDG	SS	800 mm
M20B/1000	HDG	SS	1000 mm

**SPECIFICATIONS:**

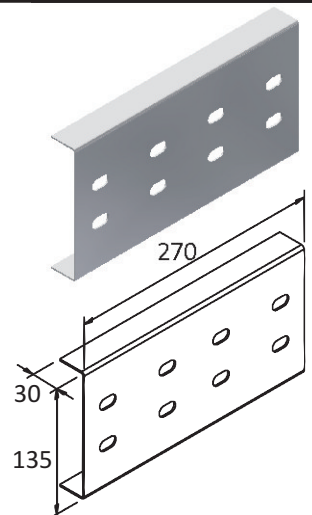
Application: Horizontal Mounting  
 Material: Mild Steel  
 Cross Rung Spacing: 300 mm  
 Accessories Radius: 650 mm and 1000 mm



**M20B TEE**



**M20B 4-WAY**



**M20B SPLICE SET**

**Hardware:**

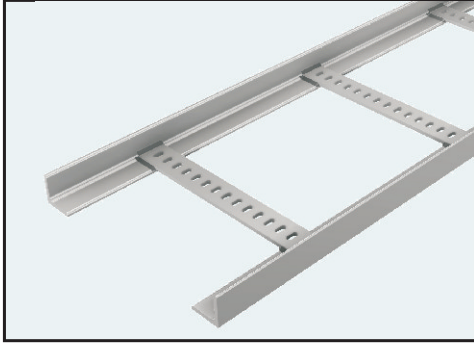
- 2 Off: Splice Plates.
- 16 Off: M10 x 20 Button Head Allen Cap Screws.
- 16 Off: M10 Hex Nuts.
- 16 Off: M10 Flat Washer.

Designed and Tested in accordance with NEMA 20B Specification.

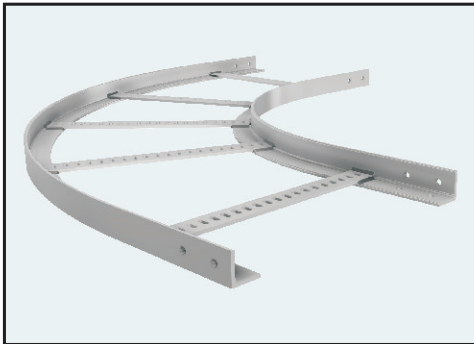


# Cable Ladder

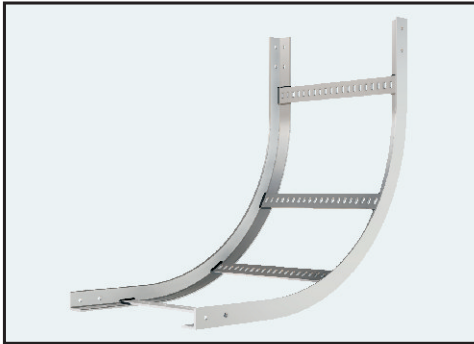
Angle Iron Cable Ladder | Made to Customer Specifications



**ANGLE IRON CABLE LADDER STR X 3M**



**ANGLE IRON HORIZONTAL BEND R 450**

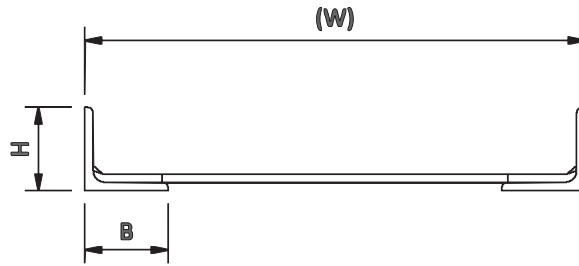


**ANGLE IRON INTERNAL BEND R 450  
USED AS INTERNAL BEND 90°**



**ANGLE IRON EXTERNAL BEND R 450  
USED AS EXTERNAL BEND 90°**

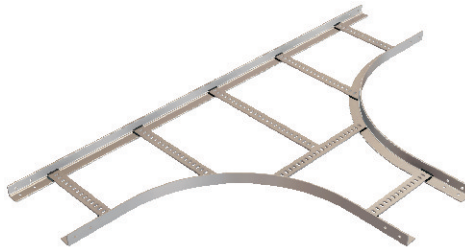
Straight Section: = 3M



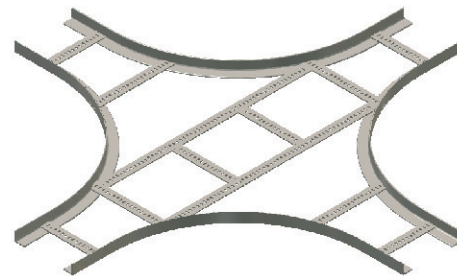
Part No:	Finish		W
ANGLE IRON/100	HDG	SS	100 mm
ANGLE IRON/150	HDG	SS	150 mm
ANGLE IRON/200	HDG	SS	200 mm
ANGLE IRON/300	HDG	SS	300 mm
ANGLE IRON/400	HDG	SS	400 mm
ANGLE IRON/450	HDG	SS	450 mm
ANGLE IRON/500	HDG	SS	500 mm

**SPECIFICATIONS:**

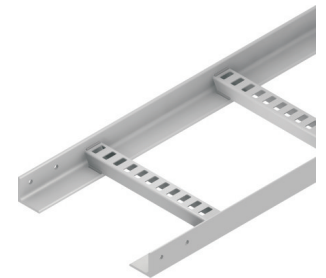
Application: Horizontal Mounting  
 Material: Mild Steel  
 Angle (Equal Leg) H x B: 25 x 25, 30 x 30, 45 x 45, 50 x 50, 60 x 60 and 70 x 70 mm  
 Cross Rung Spacing: 300 mm  
 Cross Rung Types: Cross rung Over Flange, Butt-Welded Flat Bar and U-Cross rung  
 Accessories Radius: 450 mm and 650 mm



**ANGLE IRON TEE**



**ANGLE IRON 4-WAY**



U-CROSS RUNG



BUTT-WELD FLAT BAR



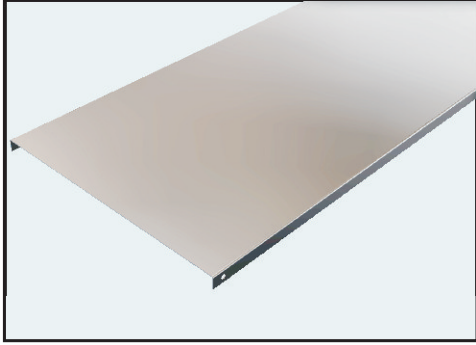
CROSS RUNG OVER FLANGE

Designed For Your Cable Support Requirements.

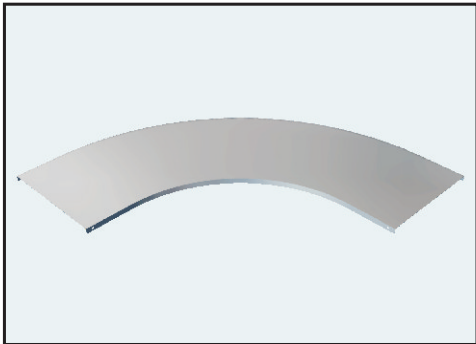


# Cable Ladder Covers

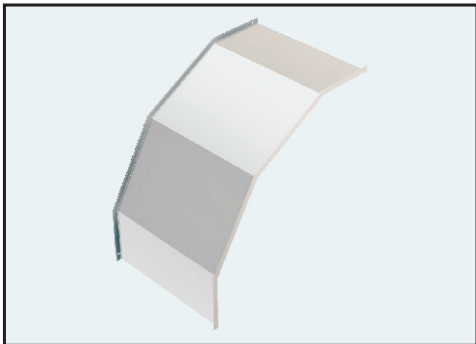
## Cable Ladder Flat Covers



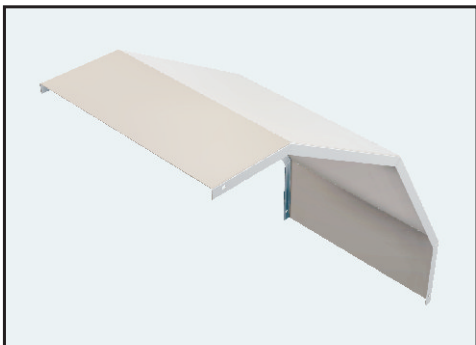
**CABLE LADDER FLAT COVER STRAIGHT**



**HORIZONTAL BEND FLAT COVER R450**



**INTERNAL BEND FLAT COVER R450**  
USED AS INTERNAL BEND 90°

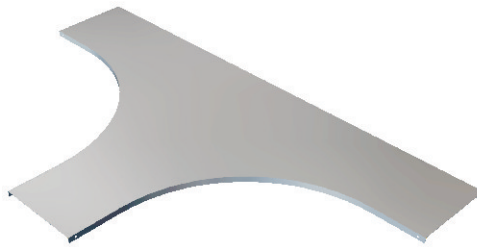


**EXTERNAL BEND FLAT COVER R450**  
USED AS EXTERNAL BEND 90°

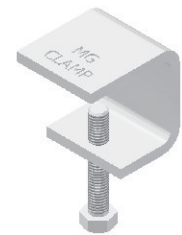
Straight Section: = 1.5M



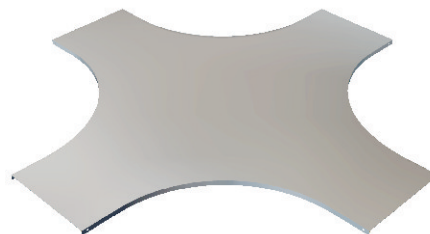
Part No:	Finish		W
M55,76,75,20B/100	HDG	SS	100mm
M55,76,75,20B/150	HDG	SS	150mm
M55,76,75,20B/200	HDG	SS	200mm
M55,76,75,20B/300	HDG	SS	300mm
M55,76,75,20B/400	HDG	SS	400mm
M55,76,75,20B/500	HDG	SS	500mm
M55,76,75,20B/600	HDG	SS	600mm
M55,76,75,20B/800	HDG	SS	800mm
M55,76,75,20B/1000	HDG	SS	1000mm



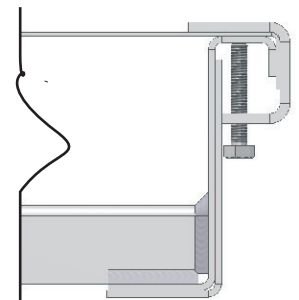
**TEE FLAT COVER R450**



**CABLE LADDER FLAT COVER CLAMP**



**4-WAY FLAT COVER R450**

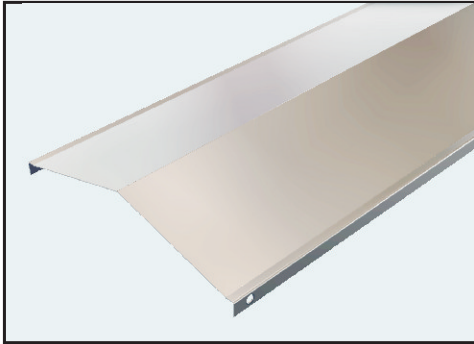


Typical Front View

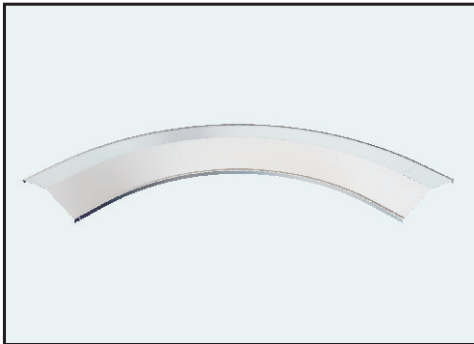
Designed For Your Cable Support Requirements.

# Cable Ladder Peaked Covers

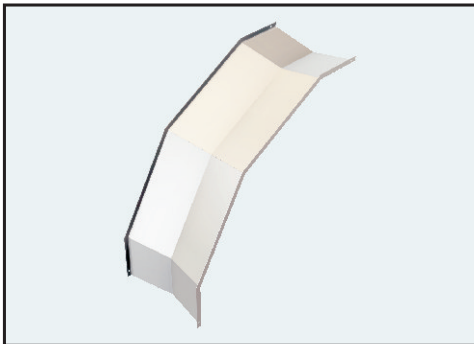
Cable Ladder Peaked Covers



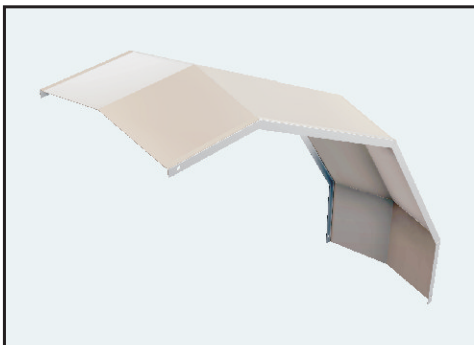
**CABLE LADDER FLAT COVER STRAIGHT**



**HORIZONTAL BEND FLAT COVER R450**

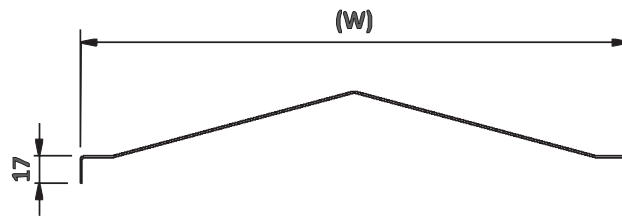


**INTERNAL BEND FLAT COVER R450**  
USED AS INTERNAL BEND 90°

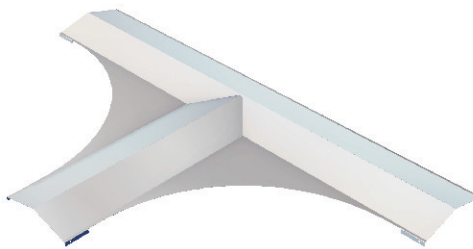


**EXTERNAL BEND FLAT COVER R450**  
USED AS EXTERNAL BEND 90°

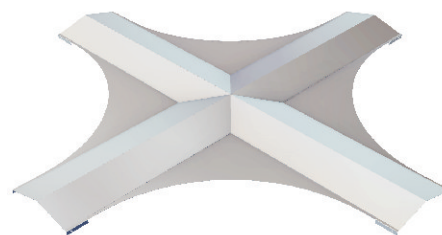
Straight Section: = 1.5M



Part No:	Finish		W
MP75,20B/100	HDG	SS	100mm
MP75,20B/150	HDG	SS	150mm
MP75,20B/200	HDG	SS	200mm
MP75,20B/300	HDG	SS	300mm
MP75,20B/400	HDG	SS	400mm
MP75,20B/500	HDG	SS	500mm
MP75,20B/600	HDG	SS	600mm
MP75,20B/800	HDG	SS	800mm
MP75,20B/1000	HDG	SS	1000mm



**TEE FLAT COVER R450**

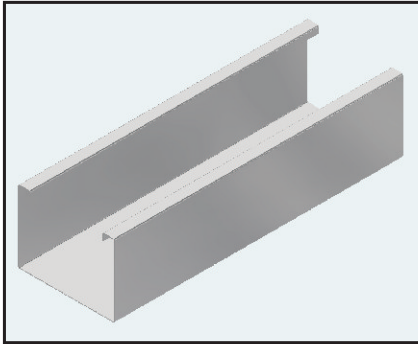


**4-WAY FLAT COVER R450**

Designed For Your Cable Support Requirements.

# CABLE TRUNKING

## Wiring Channels and Covers

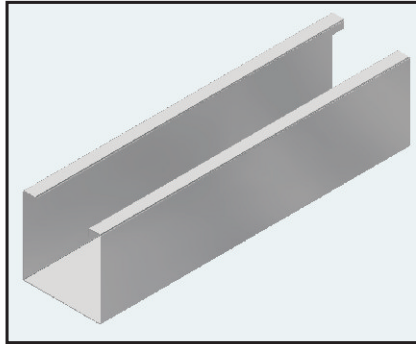


Wiring Channel: H x B = 76 x 100

**M7100**

Mass: 5.5

Finish Code: Pre-Galvanized

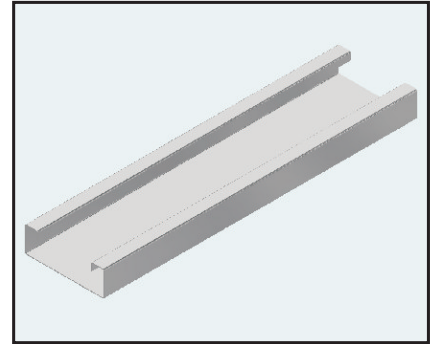


Wiring Channel: H x B = 76 x 76

**M8000**

Mass: 4.9

Finish Code: Pre-Galvanized



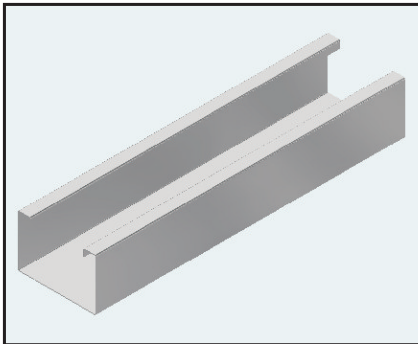
Wiring Channel: H x B = 25 x 76

**M8100**

Mass: 3.0

Finish Code: Pre-Galvanized

Send your enquiries to us and we will resolve your issues, using our technical innovation experience.

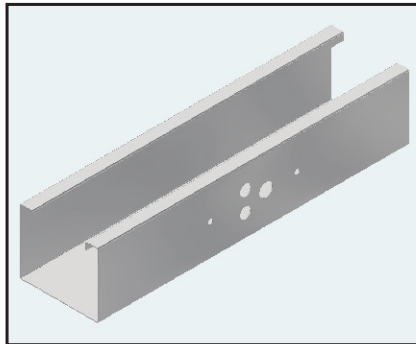


Wiring Channel: H x B = 51 x 76

**M8200**

Mass: 4.0

Finish Code: Pre-Galvanized

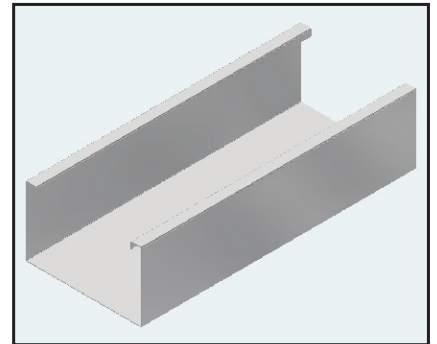


Wiring Channel: H x B = 63 x 76

**M8300**

Mass: 4.5

Finish Code: Pre-Galvanized



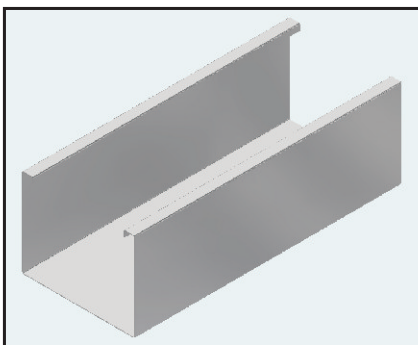
Wiring Channel: H x B = 76 x 127

**M9000**

Mass: 5.9

Finish Code: Pre-Galvanized

Wiring Channels can be supplied in various finishes i.e. Pre-Galvanized. Powder coated or Painted.

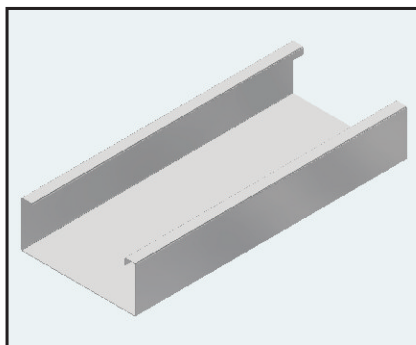


Wiring Channel: H x B = 100 x 127

**M9100**

Mass: 6.8

Finish Code: Pre-Galvanized

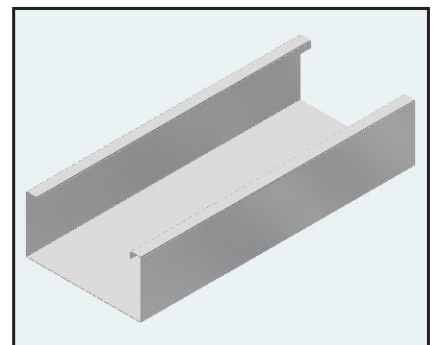


Wiring Channel: H x B = 51 x 127

**M9200**

Mass: 5.0

Finish Code: Pre-Galvanized



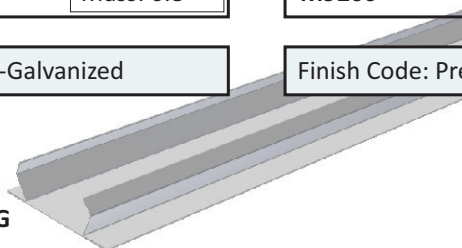
Wiring Channel: H x B = 63 x 127

**M9300**

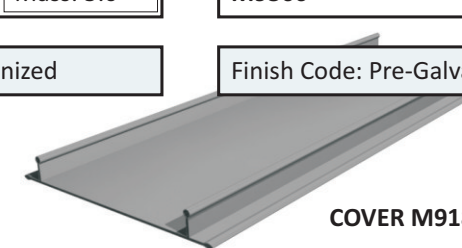
Mass: 5.4

Finish Code: Pre-Galvanized

COVER M9184-PG

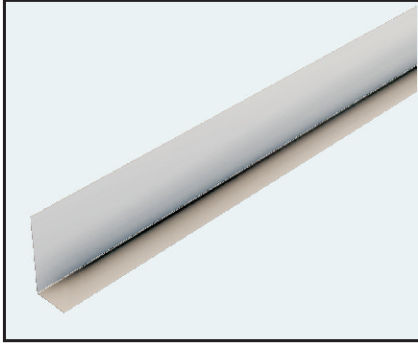


COVER M9184-PVC



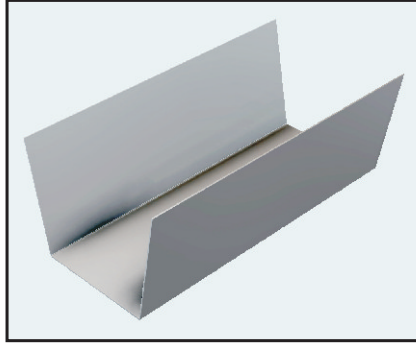
# CABLE TRUNKING

Wiring Channels - Accessories



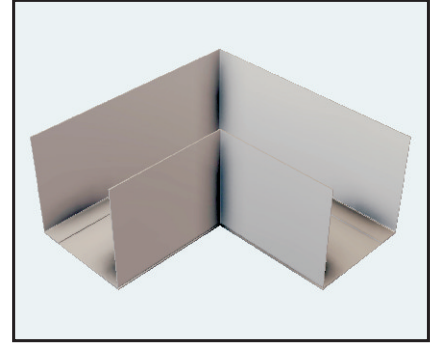
**M8000/9000 DIVIDER**

Finish Code: Pre-Galvanized



**M8000/9000 INTERNAL SPLICE**

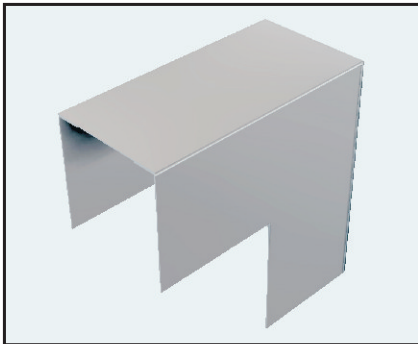
Finish Code: Pre-Galvanized



**M8000/9000 HORIZONTAL ELBOW**

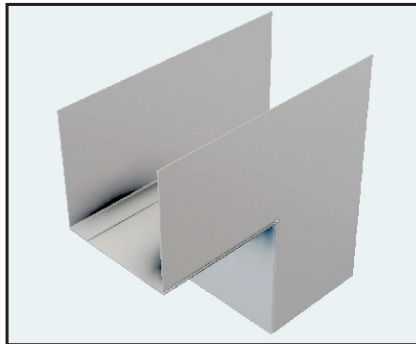
Finish Code: Pre-Galvanized

Send your enquiries to us and we will resolve your issues, using our technical innovation experience.



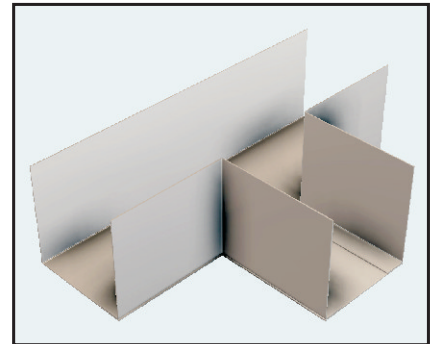
**M8000/9000 INTERNAL ELBOW**

Finish Code: Pre-Galvanized



**M8000/9000 EXTERNAL ELBOW**

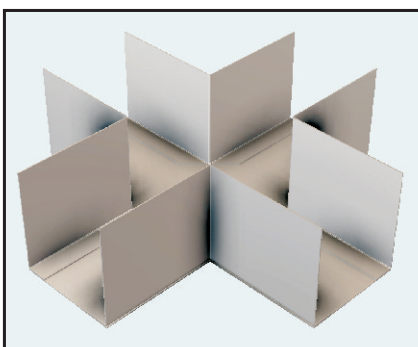
Finish Code: Pre-Galvanized



**M8000/9000 TEE**

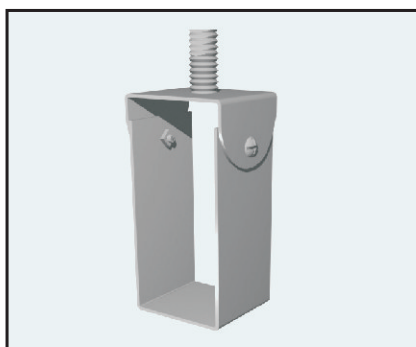
Finish Code: Pre-Galvanized

Wiring Channels can be supplied in various finishes i.e. Pre-Galvanized. Powder coated or Painted.



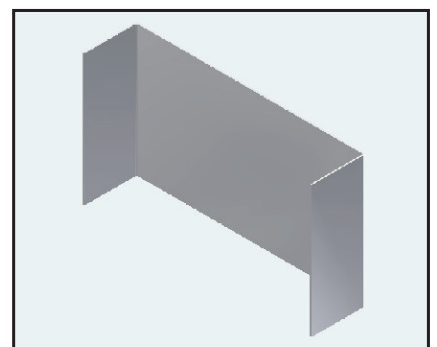
**M8000/9000 4-WAY**

Finish Code: Pre-Galvanized



**M8000/9000 HANGER**

Finish Code: Pre-Galvanized

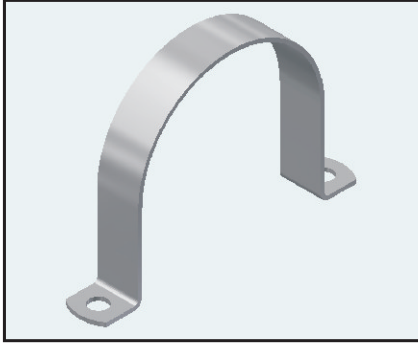


**M8000/9000 END CAP**

Finish Code: Pre-Galvanized

# CLAMPS

## P - Series Pipe Clamp

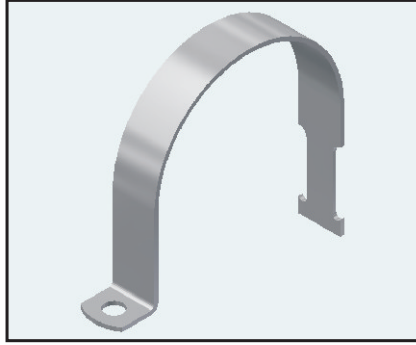


TWO HOLE PIPE CLAMP

### PC1 PIPE CLAMP

Finish Code: Pre - Galvanized

PRODUCT RANGE	PIPE DIAM (mm)
PC1	21 (mm)
PC1/1	27 (mm)
PC1/2	34 (mm)
PC1/3	42 (mm)
PC1/4	48 (mm)
PC1/5	60 (mm)
PC1/6	76 (mm)
PC1/7	89 (mm)
PC1/8	101 (mm)
PC1/9	114 (mm)
PC1/10	142 (mm)
PC1/11	173 (mm)
PC1/12	219 (mm)

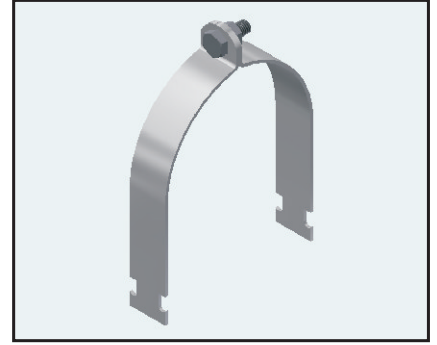


ONE HOLE PIPE CLAMP

### PC2 PIPE CLAMP

Finish Code: Pre - Galvanized

PRODUCT RANGE	PIPE DIAM (mm)
PC2	21 (mm)
PC2/1	27 (mm)
PC2/2	34 (mm)
PC2/3	42 (mm)
PC2/4	48 (mm)
PC2/5	60 (mm)
PC2/6	76 (mm)
PC2/7	89 (mm)
PC2/8	101 (mm)
PC2/9	114 (mm)
PC2/10	142 (mm)
PC2/11	173 (mm)
PC2/12	219 (mm)

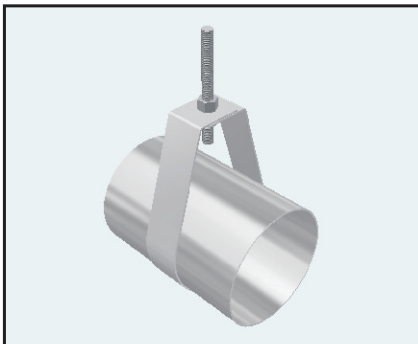


### 2P PIPE CLAMP

Finish Code: Pre - Galvanized

PRODUCT RANGE	PIPE DIAM (mm)	SCREW SIZE
2P09	15-18	M6 x 20 mm Hex & Nut
2P11	19-23	M6 x 25 mm Hex Set Screw & Nut
2P12	24-29	M8 x 35mm Hex Set Screw & Nut
2P13	32-36	M8 x 35mm Hex Set Screw & Nut
2P14	38-44	M8 x 35mm Hex Set Screw & Nut
2P15	43-57	M10 x 50mm Hex Set Screw & Nut
2P17	54-70	M10 x 50mm Hex Set Screw & Nut
2P18	71-85	M10 x 50mm Hex Set Screw & Nut
2P19	87-95	M10 x 50mm Hex Set Screw & Nut
2P20	99-110	M10 x 50mm Hex Set Screw & Nut
2P21	110-122	M10 x 50mm Hex Set Screw & Nut
2P22	116-140	M10 x 50mm Hex Set Screw & Nut
2P23	135-145	M10 x 50mm Hex Set Screw & Nut
2P24	155-180	M10 x 60mm Hex Set Screw & Nut
2P25	175-206	M10 x 60mm Hex Set Screw & Nut
2P26	188-228	M10 x 60mm Hex Set Screw & Nut
2P27	235-270	M10 x 60mm Hex Set Screw & Nut
2P29	260-285	M10 x 60mm Hex Set Screw & Nut

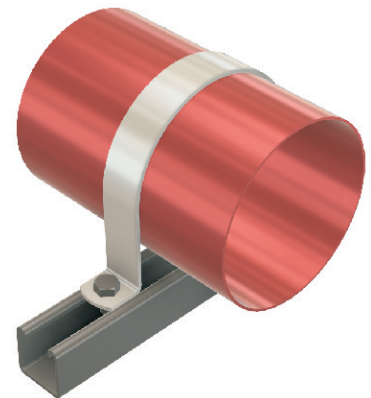
## PH75 - Series Pipe Hanger



### PH75 PIPE HANGER

Finish Code: Pre - Galvanized

PRODUCT RANGE	PIPE DIAM (mm)	HOLE SIZE
PH75/15	21	M8/M10
PH75/20	27	M8/M10
PH75/25	34	M8/M10
PH75/30	42	M8/M10
PH75/40	48	M8/M10
PH75/50	60	M8/M10
PH75/60	76	M10
PH75/80	89	M10
PH75/100	114	M12
PH75/125	140	M12
PH75/150	166	M12
PH75/200	219	M12



When the job calls for Strut Connections, Megastrut Connections is simply the best choice.



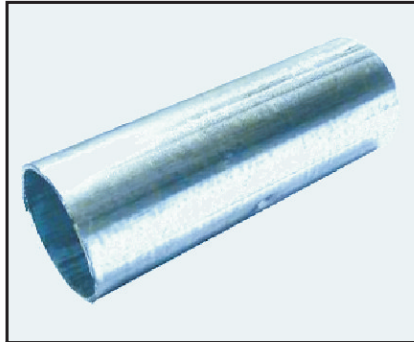
# STEEL CONDUIT AND ACCESSORIES

Conduit Connection



**STRAIGHT LENGTH X 4M**

- 20 mm O/D
- 25 mm O/D
- 32 mm O/D
- 40 mm O/D
- 50 mm O/D



**SOLID COUPLING**

- 20 mm O/D
- 25 mm O/D
- 32 mm O/D
- 40 mm O/D
- 50 mm O/D



**1 WAY SIDE ENTRY (NO LID)**

- 20 mm O/D
- 25 mm O/D



**2 WAY THROUGH (NO LID)**

- 20 mm O/D
- 25 mm O/D



**2 WAY ANGLE (NO LID)**

- 20 mm O/D
- 25 mm O/D



**3 WAY THROUGH (NO LID)**

- 20 mm O/D
- 25 mm O/D



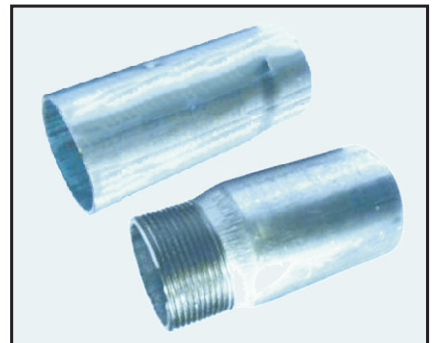
**4 WAY (NO LID)**

- 20 mm O/D
- 25 mm O/D



**90 DEG BEND**

- 20 mm
- 25 mm
- 32 mm
- 40 mm
- 50 mm



**FEMALE/MALE ADAPTOR**

- 20 mm O/D
- 25 mm O/D
- 32 mm O/D
- 40 mm O/D
- 50 mm O/D

**HOSPITAL SADDLE**

- 20 mm
- 25 mm
- 32 mm
- 40 mm
- 50 mm



**LID FOR ACCESSORIES BOXE**

**SADDLE**

- 20 mm
- 25 mm
- 32 mm
- 40 mm
- 50 mm



# PVC CONDUIT AND ACCESSORIES

Conduit Connection

Our Popular Range of Conduit is Manufactured in White PVC



**STRAIGHT LENGTH X 4M**

20 mm O/D

25 mm O/D



**STRAIGHT COUPLER**

20 mm O/D

25 mm O/D



**1 WAY TERMINAL BOX (NO LID)**

20 mm O/D

25 mm O/D



**2 WAY THROUGH BOX (NO LID)**

20 mm O/D

25 mm O/D



**2 WAY ANGLE BOX (NO LID)**

20 mm O/D

25 mm O/D



**3 WAY TEE BOX (NO LID)**

20 mm O/D

25 mm O/D



**4 WAY INTERSECTION BOX (NO LID)**

20 mm O/D

25 mm O/D



**MALE ADAPTOR**

20 mm O/D

25 mm O/D



**FEMALE ADAPTOR**

20 mm OUTSIDE

**90 DEG BEND**



20 mm

25 mm

**SPACER BAR SADDLE**



20 mm

25 mm

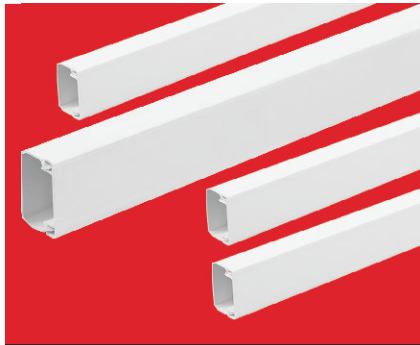
**CIRCULAR BOX LID**



STANDARD LID

# PVC CABLE TRUNKING

Compact Miniature Trunking - White



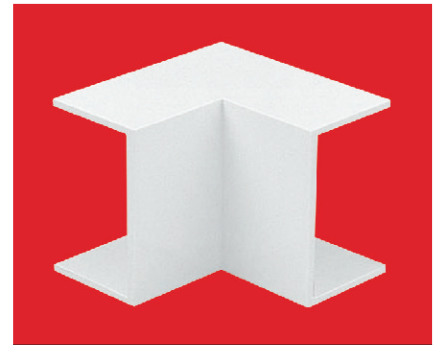
## YT SERIES MINI TRUNKING

PRODUCT CODE	TRUNKING SIZE
YT/1	16 x 16
YT/2	25 x 16
YT/3	40 x 16
YT/4	40 x 25
YT/5	40 x 40



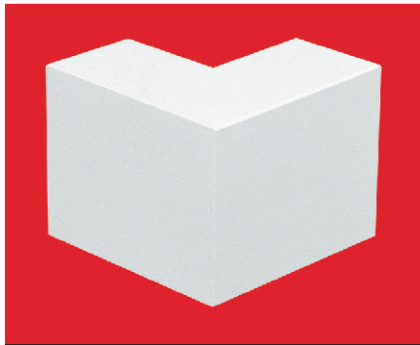
## END CAP

PRODUCT CODE	SIZE
YT/1-EC	16 x 16
YT/2-EC	25 x 16
YT/3-EC	40 x 16
YT/4-EC	40 x 25
YT/5-EC	40 x 40



## INTERNAL ANGLE

PRODUCT CODE	SIZE
YT/1-IA	16 x 16
YT/2-IA	25 x 16
YT/3-IA	40 x 16
YT/4-IA	40 x 25
YT/5-IA	40 x 40



## EXTERNAL ANGLE

PRODUCT CODE	SIZE
YT/1-EA	16 x 16
YT/2-EA	25 x 16
YT/3-EA	40 x 16
YT/4-EA	40 x 25
YT/5-EA	40 x 40



## FLAT ANGLE

PRODUCT CODE	SIZE
YT/1-FA	16 x 16
YT/2-FA	25 x 16
YT/3-FA	40 x 16
YT/4-FA	40 x 25
YT/5-FA	40 x 40



## FLAT TEE

PRODUCT CODE	SIZE
YT/1-FT	16 x 16
YT/2-FT	25 x 16
YT/3-FT	40 x 16
YT/4-FT	40 x 25
YT/5-FT	40 x 40



## INDUSTRIAL TRUNKING - GREY

PRODUCT CODE	SIZE
CLT/1	50 x 50
CLT/2	75 x 50
CLT/3	75 x 75
CLT/4	100 x 50
CLT/5	100 x 75
CLT/6	100 x 100

### Fitting

Secure trunking base at least every 385mm for mini Trunking and for Industrial Trunking every 500mm by drilling 6mm holes. Fasten using roundhead screws. To cut the trunking, use a jig-saw.

### Covers

Covers are designed to limit unauthorised removal and to remain in position during normal conditions irrespective of impact and minor undulations of the mounting surface.

### Covers – fitting

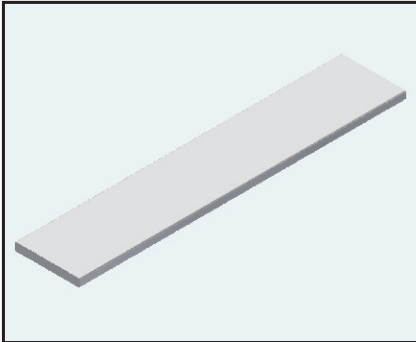
Covers are clipped into place from front.

### Covers – removal

To remove a cover, first detach a coupler or internal/external bend to gain access. The cover can then be gently eased off the base.

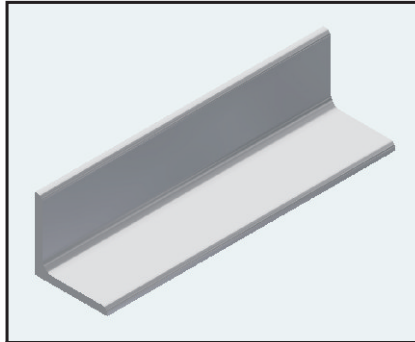
# STRUCTURAL STEEL

Standard Structural Steel



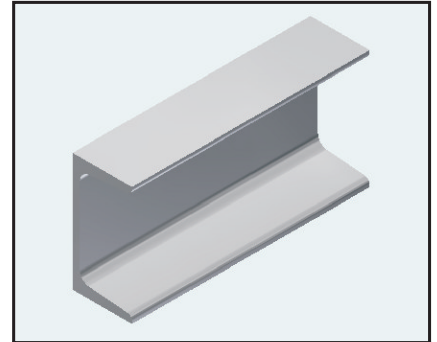
**FLAT BAR: Std length 4 m to 13 m**

SIZE (mm)	(kg/m)
20 x 5	0,79
20 x 6	0,95
25 x 5	0,99
30 x 5	1,20
30 x 6	1,40
30 x 8	1,99
40 x 5	1,58
40 x 6	1,88
50 x 5	1,95
50 x 6	2,35
60 x 6	2,85
65 x 6	3,05
70 x 6	3,30



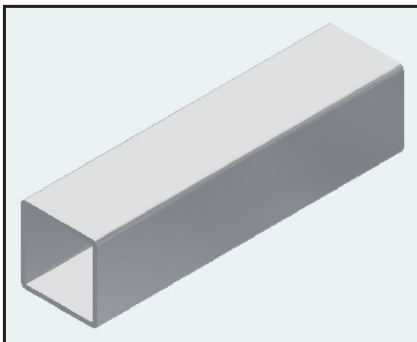
**ANGLE IRON**

SIZE (mm)	(kg/m)
25 x 25 x 3,0	1,11
25 x 25 x 5,0	1,77
30 x 30 x 3,0	1,36
30 x 30 x 5,0	2,18
40 x 40 x 3,0	1,87
40 x 40 x 5,0	2,97
50 x 50 x 3,0	2,37
50 x 50 x 5,0	3,77
50 x 50 x 6,0	4,47
60 x 60 x 5,0	4,57
60 x 60 x 6,0	5,42
70 x 70 x 6,0	6,38
70 x 70 x 8,0	8,36



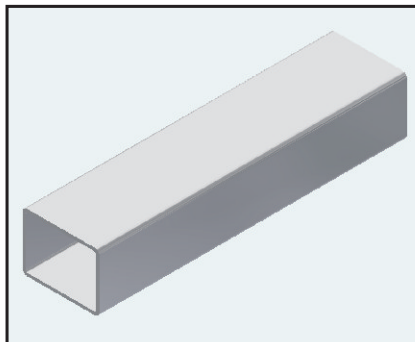
**TAPER FLANGE CHANNEL**

SIZE (mm)	(kg/m)
C76 x 38 (LIGHT)	-
C76 x 38	6,70
C100 x 50 (LIGHT)	8,90
C100 x 50	10,70
C120 x 55	12,50
C127 x 64	14,90
C140 x 60	16,20
C152 x 76	17,90
C160 x 65	19,10
C178 x 54	14,50
C180 x 70	22,30
C200 x 75	25,30



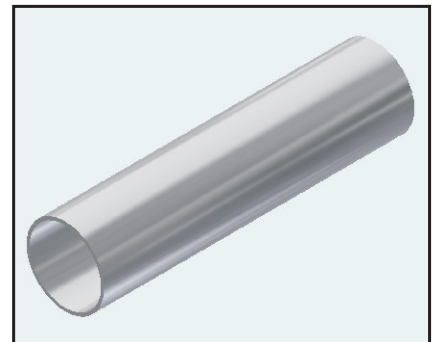
**SQUARE TUBE**

SIZE (mm)	(kg/m)
12 x 12 x 1,6	0,48
16 x 16 x 1,6	0,69
19 x 19 x 1,6	0,83
25 x 25 x 2,0	1,40
32 x 32 x 1,6	1,48
38 x 38 x 2,0	2,22
50 x 50 x 1,6	2,39
50 x 50 x 2,0	2,97
76 x 76 x 1,6	3,70
76 x 76 x 2,0	4,61
100 x 100 x 2,0	6,12
120 x 120 x 3,0	10,99



**RECTANGULAR TUBE**

SIZE (mm)	(kg/m)
25 x 12 x 1,6	0,80
38 x 20 x 1,6	1,33
38 x 20 x 2,0	1,65
38 x 25 x 1,6	1,46
50 x 25 x 1,6	1,76
50 x 25 x 2,0	2,19
50 x 38 x 1,6	2,09
50 x 38 x 2,0	2,59
76 x 25 x 1,6	2,41
76 x 25 x 2,0	3,00
76 x 50 x 1,6	3,04
100 x 50 x 2,0	4,55



**ROUND TUBE**

OD SIZE (mm)	(kg/m)
19 x 1,6	0,70
21 x 1,6	0,78
25 x 1,6	0,94
25 x 2,0	1,16
32 x 1,6	1,22
32 x 2,0	1,50
38 x 1,6	1,46
38 x 2,0	1,81
48 x 1,6	1,87
48 x 2,0	2,31
50 x 1,6	1,94
76 x 2,0	3,72

## Need Solution? Try Megastrut Connections free design service today!

Megastrut Connections is a team of highly experienced and talented product designers and engineers. We specialise in providing an end-to-end, high quality product, product design solutions and manufacturing, encompassing all aspects of the project. We are passionate about what we do, ensuring we deliver you the very best results. With knowledge and expertise across a breadth of services we're able to create exceptional functioning products from scratch. From designing a tangible product, through to creating functional components, within budget and under one roof. Our philosophy is to achieve the most suitable design solution possible, to meet your brief. By calling on our in-depth knowledge of product design and manufacturing, we aim to provide you with that perfect solution that puts you in a market-leading position. Your success is our success, and we want to share that experience with you!

When the job calls for solution, Megastrut Connections is simply the best choice. Simply contact Megastrut Connections team of experienced Engineers and they will advise a suitable solution for you. providing drawings in 2D or interactive 3D formats as well as CAD files that can be imported into all major software applications.

